



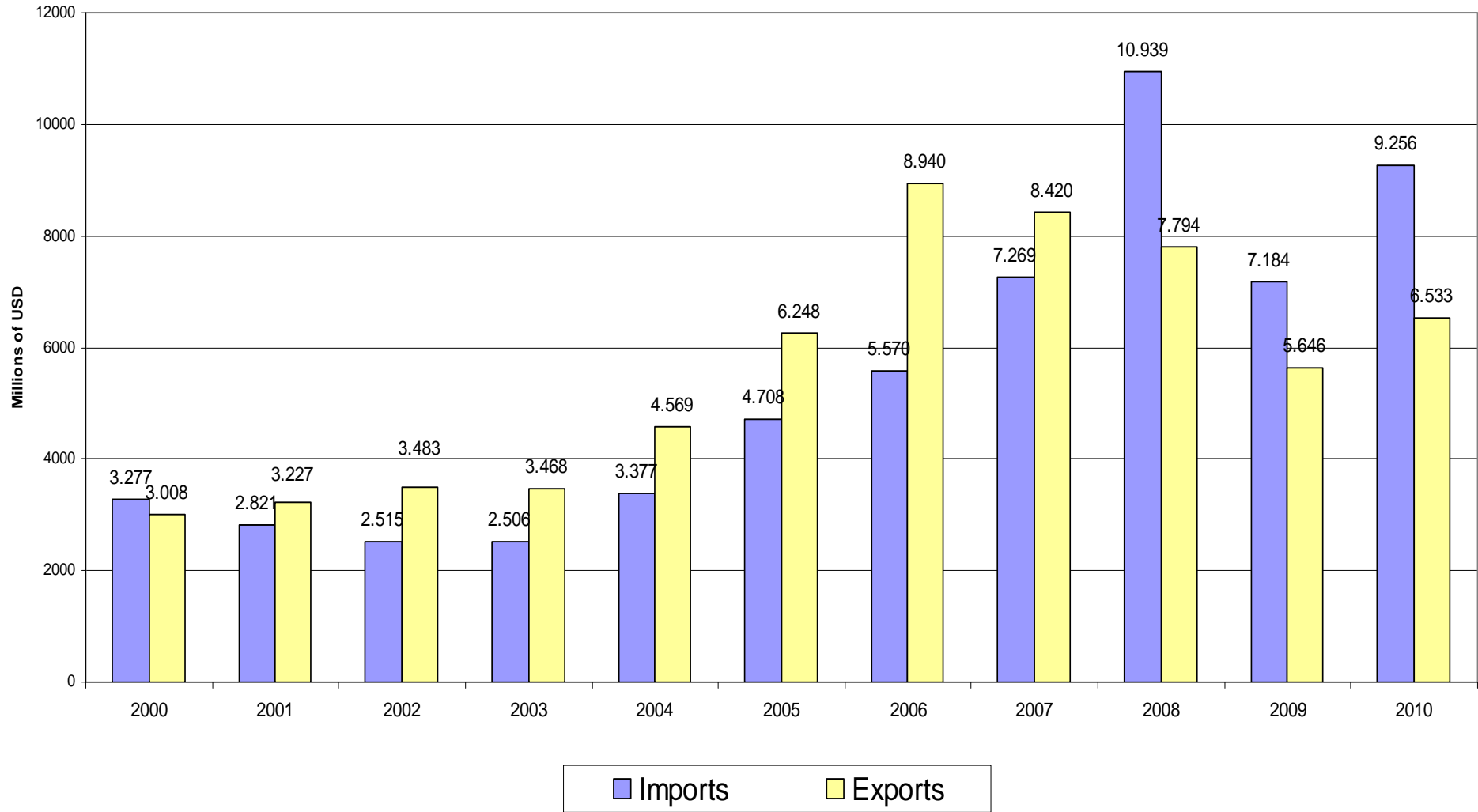
Bilateral Trade between Chile and the U.S.

January - December 2010



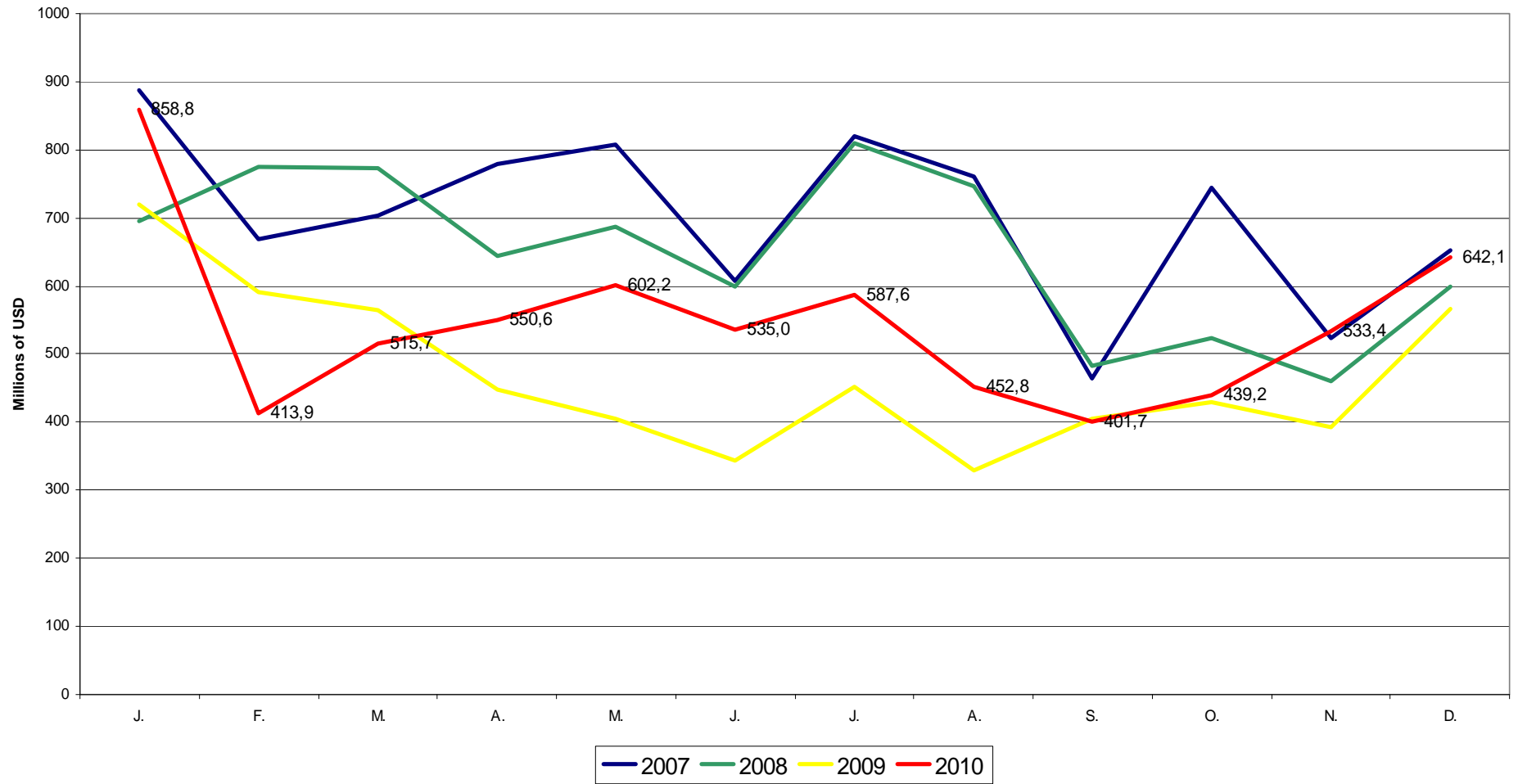
Trade in Goods

Trade between Chile and the U.S. January-December of each year



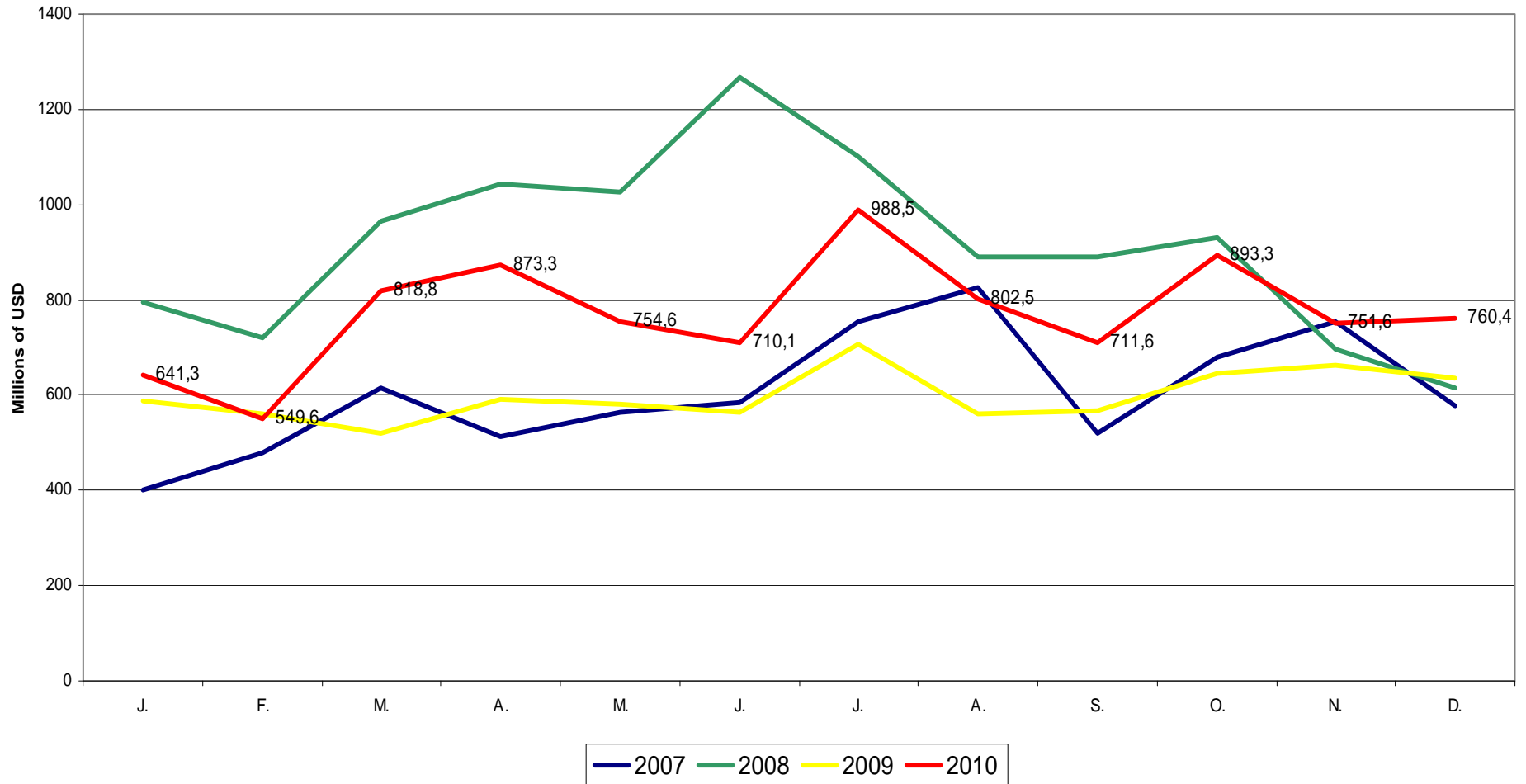
Source: Legal Publishing

Monthly Exports from Chile to the U.S.



Source: Legal Publishing

Monthly Imports to Chile from the U.S.



Source: Legal Publishing

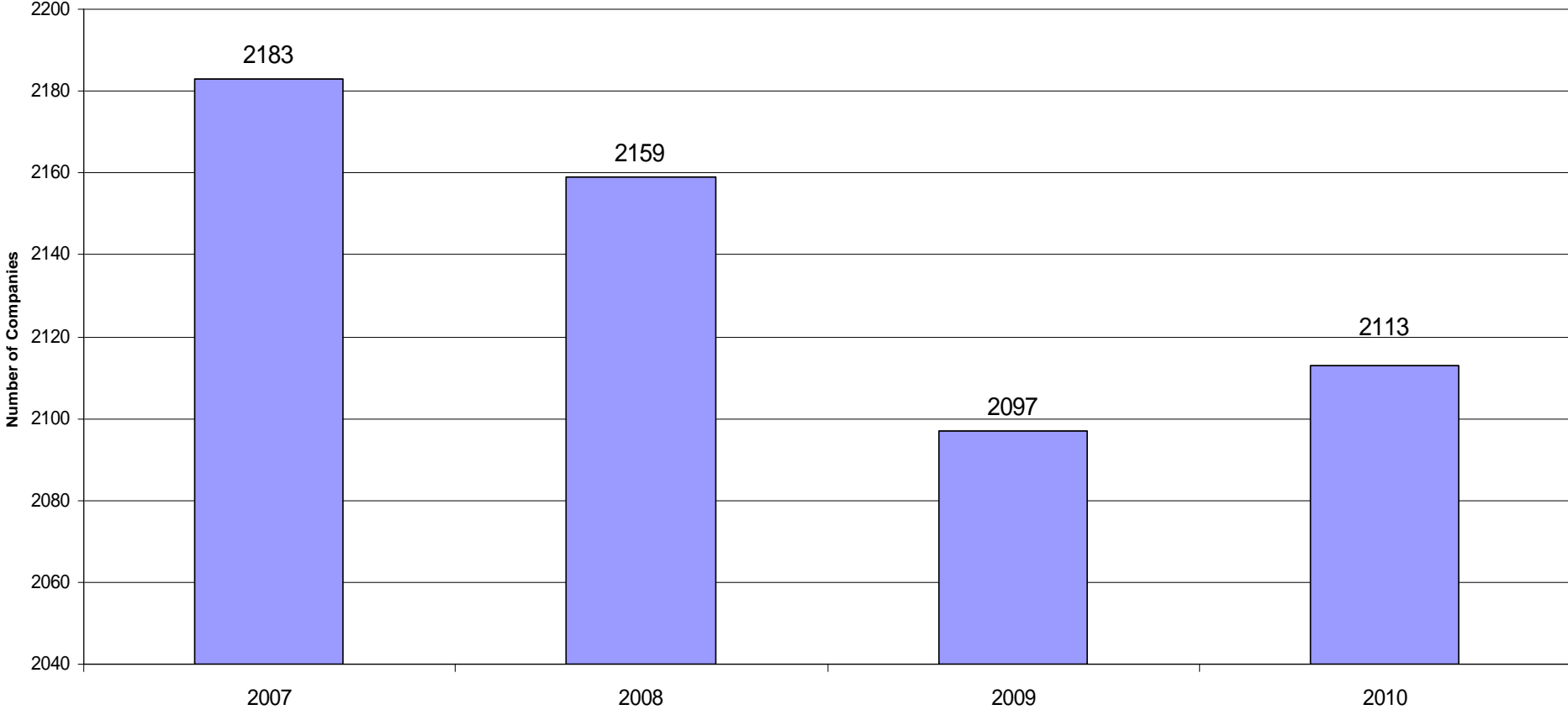
Ranking - Exporters to the U.S.
January - December, 2010

Name	Amount (USD)	Variation %*
CODELCO-CHILE	1.255.356.989,56	43,6
MINERA SPENCE S.A.	300.720.643,42	72,1
MOLIBDENOS Y METALES S.A.	189.348.683,69	38,6
ANGLO AMERICAN SUR S.A	150.240.458,38	186,4
PANELES ARAUCO S.A.	136.921.643,16	38,6
ANGLO AMERICAN NORTE S.A	136.774.459,34	73,9
SOC. CONT. MINERA EL ABRA	124.000.169,17	25,2
MINERA ESCONDIDA LTDA.	120.940.264,65	17,7
ASERRADEROS ARAUCO S.A.	119.011.041,59	27,7
SOCIEDAD QUIMICA Y MINERA DE C	82.000.803,00	16,4
MINERA LOS PELAMBRES	81.305.103,70	310,0
COMPANIA MINERA ZALDIVAR S.A.	75.170.813,68	8,2
MINERA EL TESORO	74.222.901,66	78,5
CMPC MADERAS S.A.	72.690.144,04	0,3
SQM INDUSTRIAL S.A.	72.412.291,89	19,3

*Relative to the same period one year before

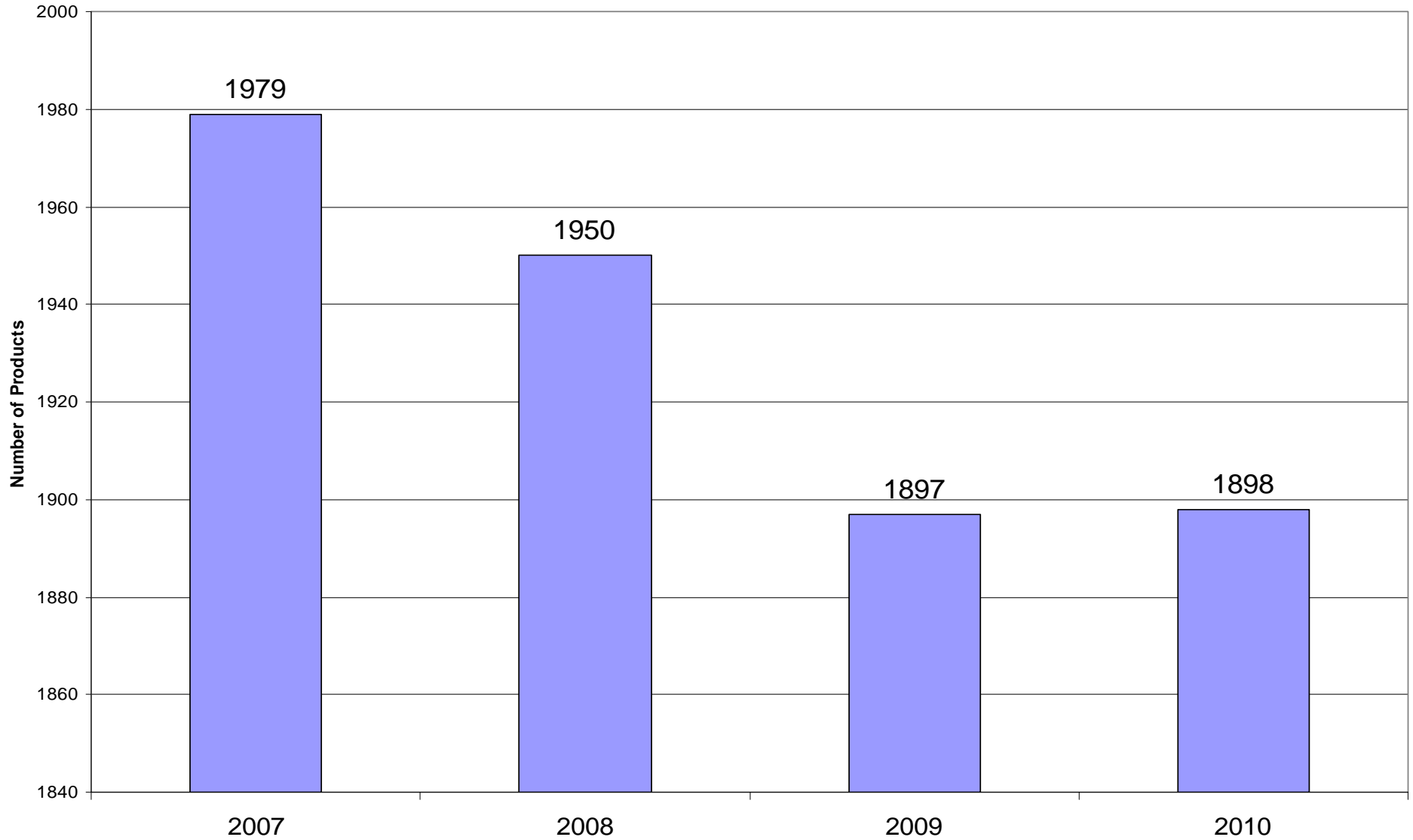
Source: Legal Publishing

**Number of Companies Exporting to the U.S.
January - December of each year**



Source: Legal Publishing

**Number of Products (to 8 digits) exported to the U.S.
January - December of each year**



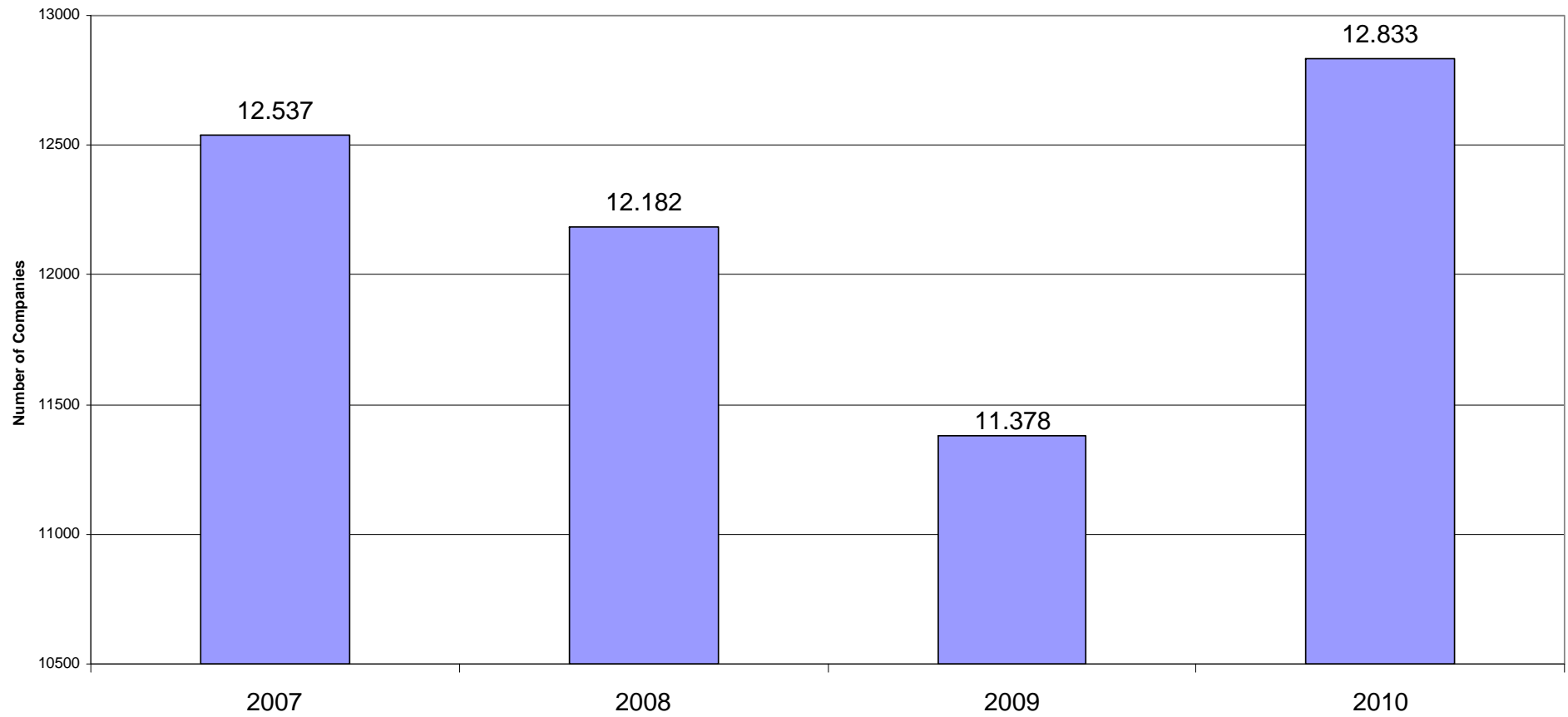
Ranking - Principal product exports to the U.S.
 8 digits from the harmonized code
 January - December, 2010

Code	Name	Amount (USD)	Variation %*
'74031100	Refined copper - cathodes and cathode sections	2.046.659.741,12	42,1
'71081200	Gold - other bulk forms	212.087.370,89	-4,7
'03041942	Atlantic and Danube Salmon Filets	187.781.305,92	-25,6
'08104020	Blueberries	171.942.913,42	72,3
'44091022	Conifers - frames and moldings	148.767.356,13	28,4
'00250000	Services considered exporting conforming to article 17 of the following....	137.968.872,10	-8,0
'08061010	Thompson seedless grapes	120.974.690,87	-6,8
'08061050	Crimson seedless grapes	116.237.729,50	23,2
'08061020	Flame seedless grapes	113.830.125,93	-11,7
'74031900	Copper - other	113.316.192,54	147,5
'28012000	Iodine	111.133.053,00	-1,8
'10051010	Corn - hybrids	103.059.868,99	20,1
'72027000	Ferro Molybdenum	95.414.416,89	127,6
'44123910	Conifer wood	92.962.918,23	-0,8
'25010020	Rock salt, salt, and sea salt	89.268.585,13	-14,9

*Relative to the same period one year before

Source: Legal Publishing

Number of Companies Importing from the U.S. January - December of each year



Source: Legal Publishing

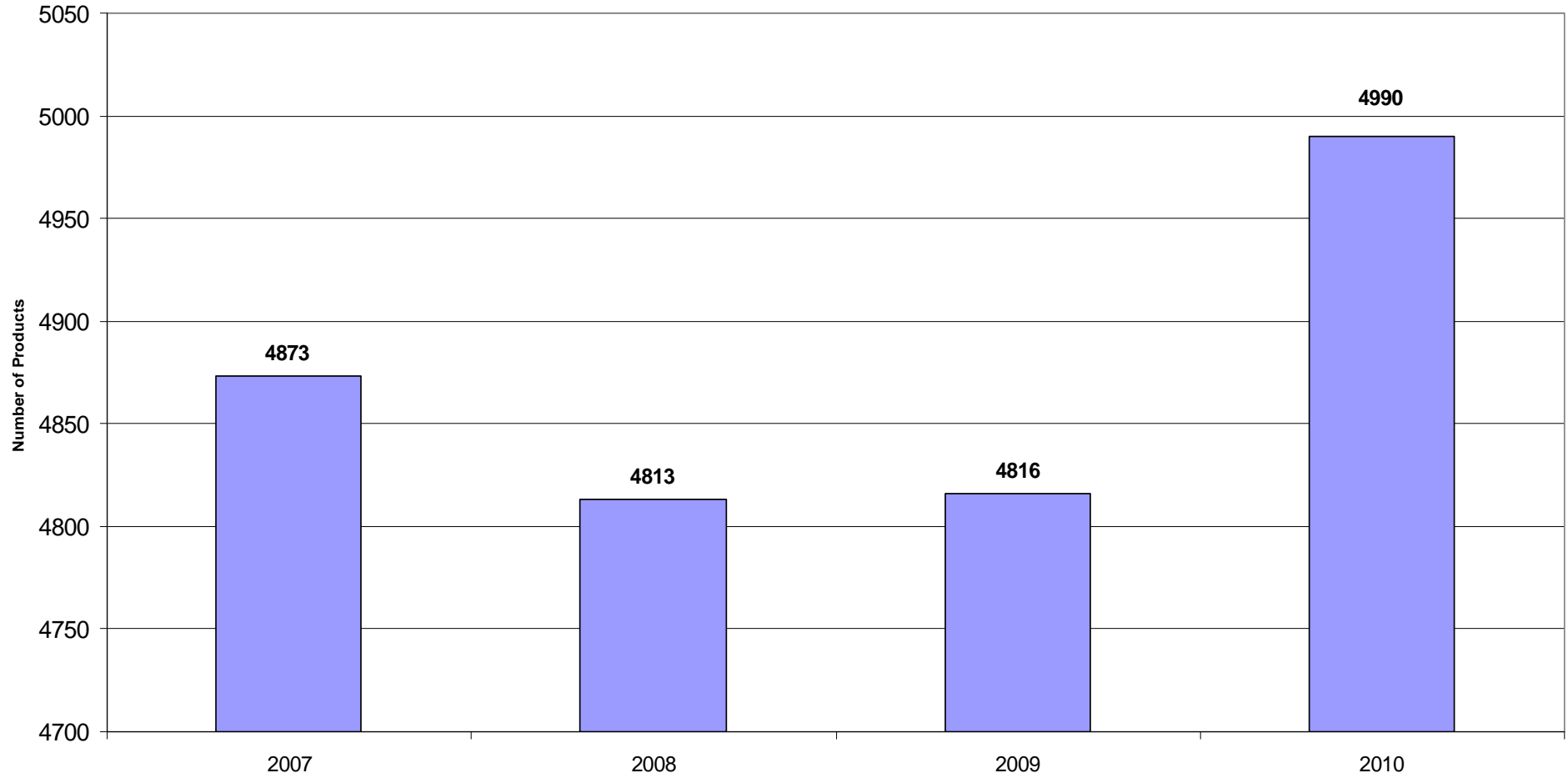
Ranking - Companies importing from the U.S.
January - December, 2010

Name	Amount (USD)	Variation %*
CIA.DE PETR.DE CHILE COPEC S.A	1.149.685.513,43	46,9
ENAP REFINERIAS S.A.	923.738.059,50	-19,7
FINNING CHILE S.A.	719.322.864,29	48,9
CODELCO-CHILE	157.556.366,55	13,4
KOMATSU CHILE S.A.	147.859.739,17	-18,5
SALINAS Y FABRES S.A.	139.856.193,59	298,9
COMERCIAL CHRYSLER S.A.	115.740.822,81	92,1
GASMAR S.A.	99.696.372,03	188,5
MINERA ESCONDIDA LTDA.	99.401.131,79	-20,8
TRANSPORTES SAN FRANCISCO LTDA	94.632.311,39	262.443,7
BUCYRUS INTERNATIONAL (CHILE)	78.697.755,64	2,1
MINEPRO CHILE S.A.	77.899.305,28	4,9
FORD MOTOR COMPANY CHILE LTDA.	73.609.656,72	98,8
ANGLO AMERICAN SUR S.A	71.269.969,25	76,3
GRANELES DE CHILE S.A.	65.441.067,60	57,5

* Relative to the same period one year before

Source: Legal Publishing

**Number of Products (to 8 digits) Imported from the U.S.
January - December of each year**



Source: Legal Publishing

Ranking - Principal products imported from the U.S.
 8 digits from the Harmonized Code
 January - December, 2010

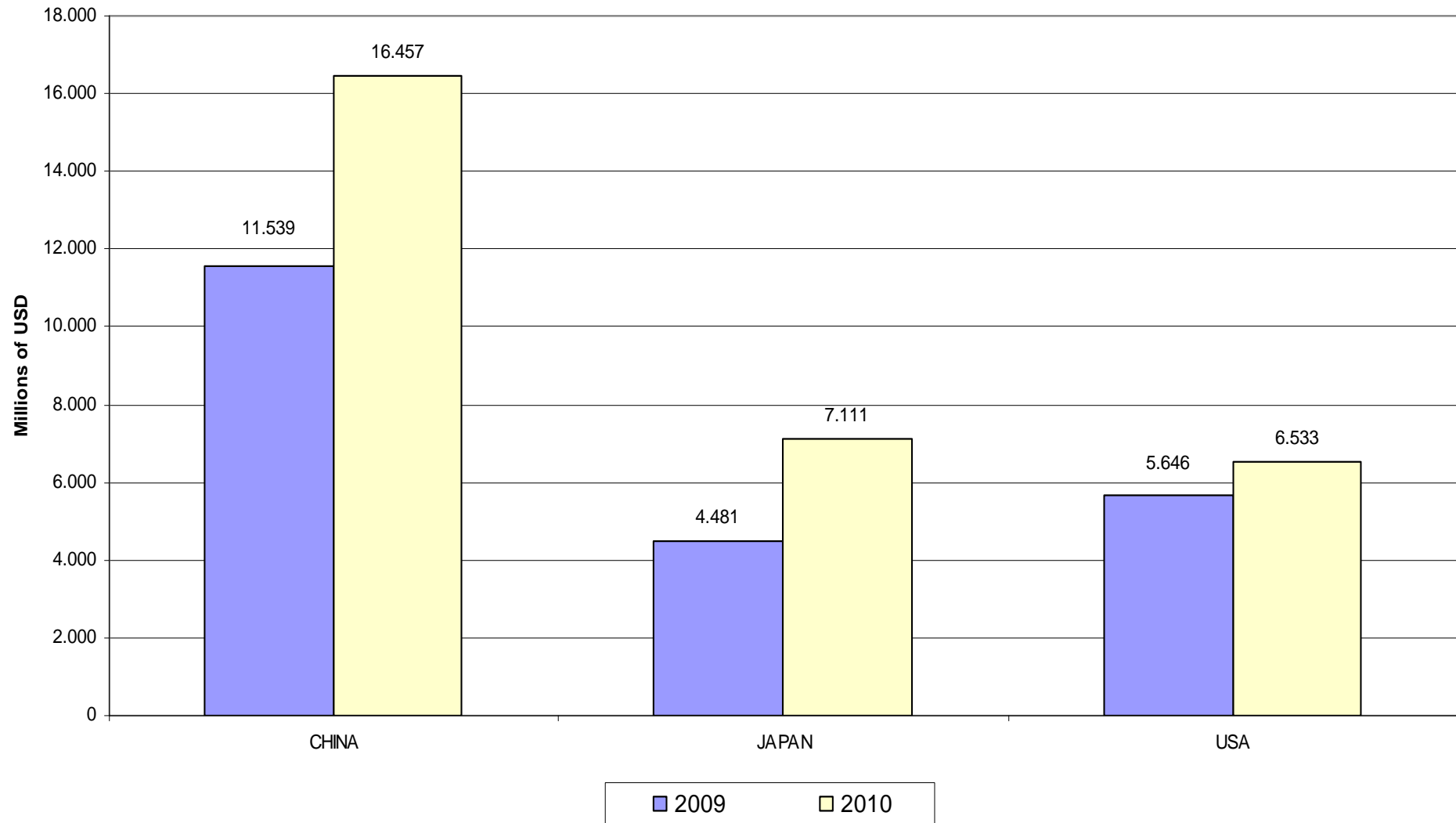
Code	Name	Amount (USD)	Variation %*
'27101940	Refined combustible oil (gasoil, diesel, oil)	1.153.895.440,28	-13,3
'87041090	Transport vehicles - other	416.344.077,58	46,3
'27101122	Refined petroleum for land vehicles, unleaded, 93 octane	216.210.805,91	818,9
'27101123	Refined petroleum for land vehicles, unleaded, 97 octane	210.379.848,58	143,9
'27101959	Heavy residual combustible oils - other	188.746.948,72	40,2
'87032491	Tourism vehicles	122.067.130,74	72,0
'87043121	Light trucks	120.187.980,20	198,7
'10019000	Wheat and Meslin	114.133.835,73	123,8
'84295110	Front-end loaders	110.834.423,37	295,9
'84314990	Parts for exploration and drilling	106.794.879,91	-0,7
'27101961	Petroleum based oils	102.388.090,75	38,0
'27111200	Propane	99.703.440,48	188,5
'29091910	Methyl tertiary butyl ether (MTBE)	93.728.073,21	-6,0
'84295290	Excavators and other equipment with superstructures that rotate 360-degrees.	87.243.020,80	43,5
'48041110	Paper	81.841.007,94	110,4

* Relative to the same period one year before

Source: Legal Publishing

Principal Destinations of Chilean Exports

January - December, 2010

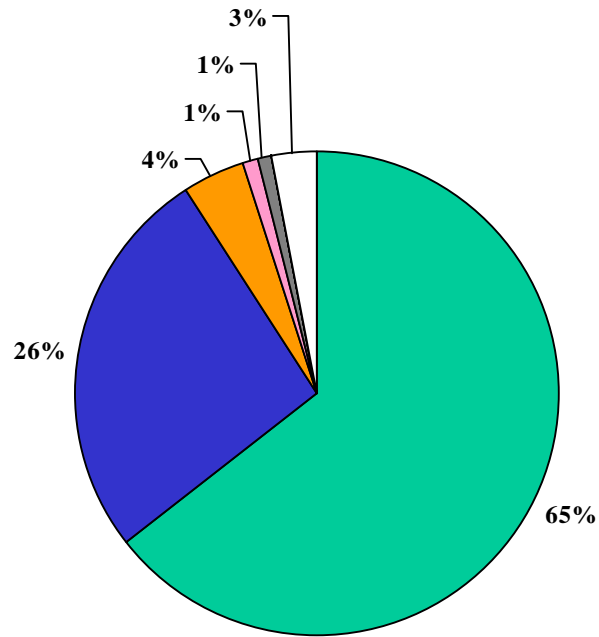


Source: Legal Publishing

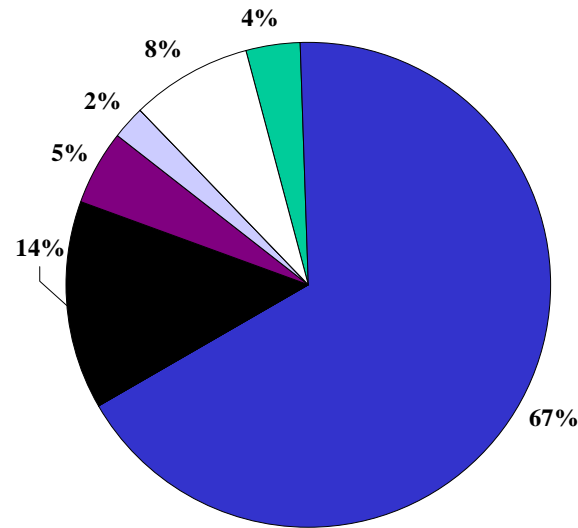
Profile of Chilean Exports by Country

January – December, 2010

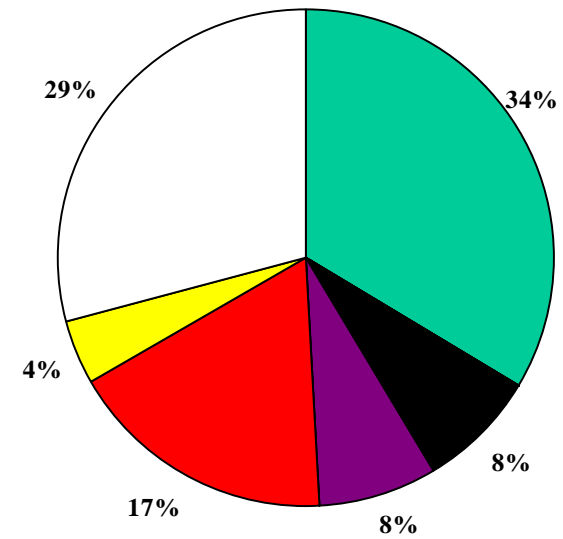
CHINA



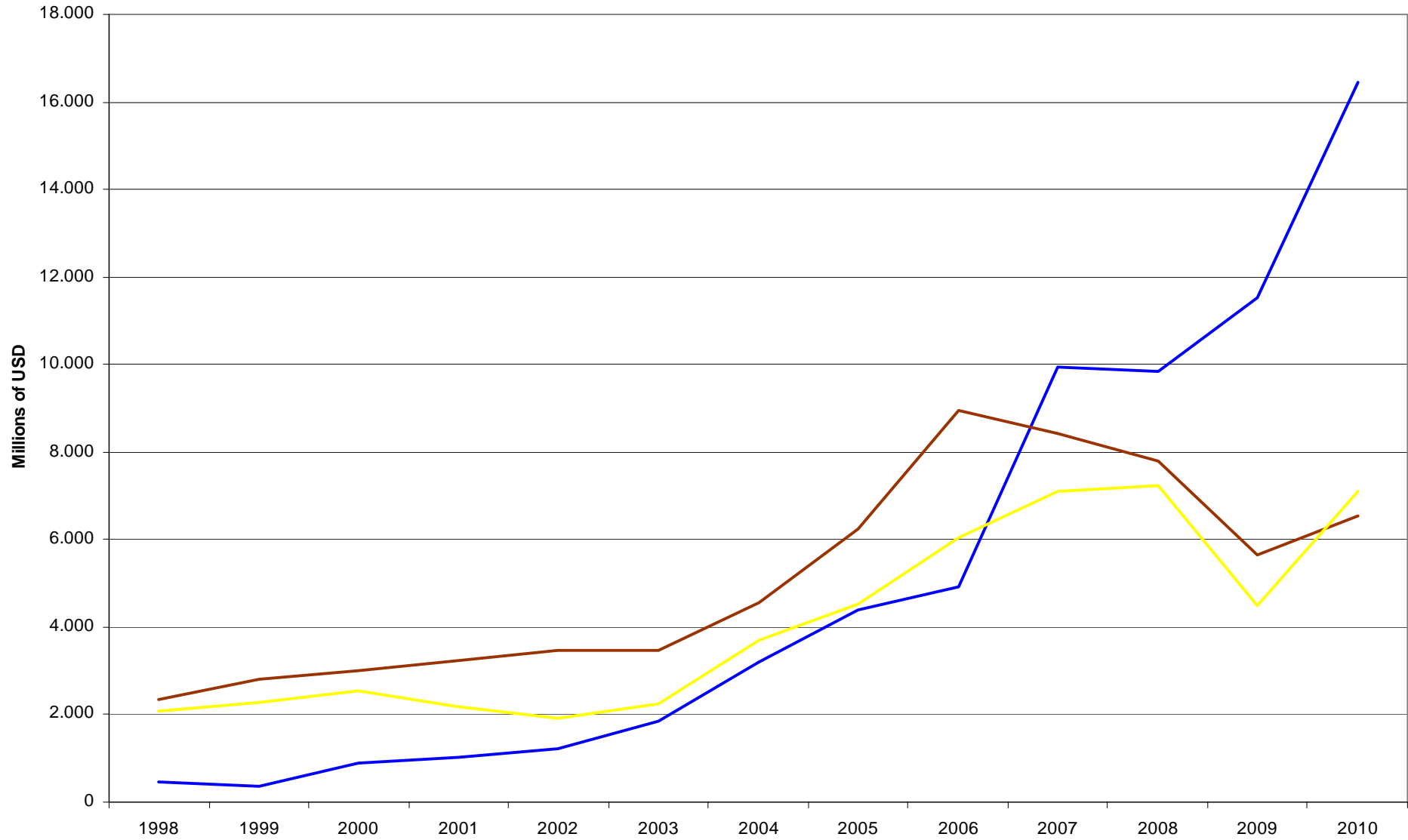
JAPAN



USA



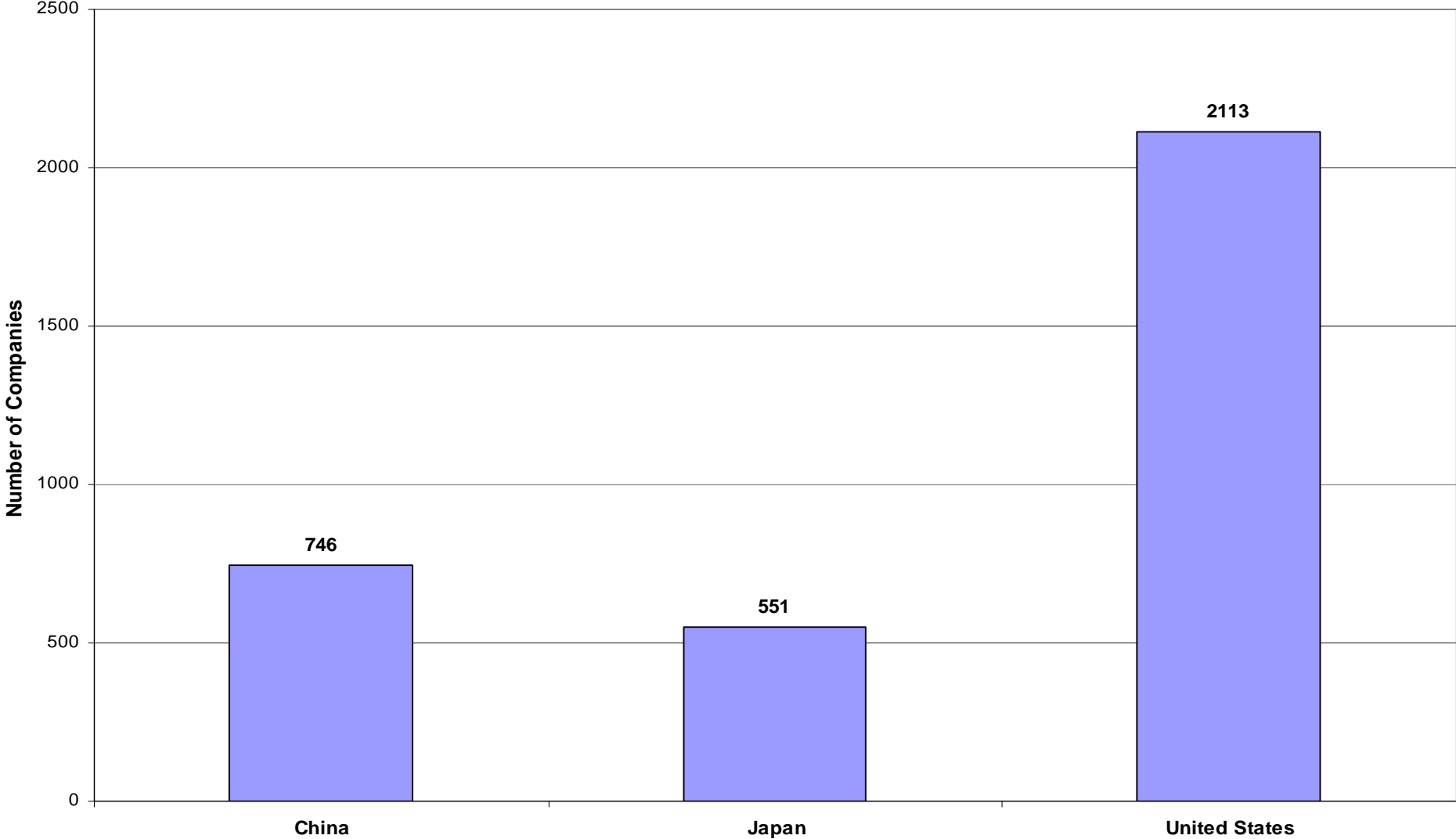
Exports to Principal Destinations January - December of each year



Source: Legal Publishing

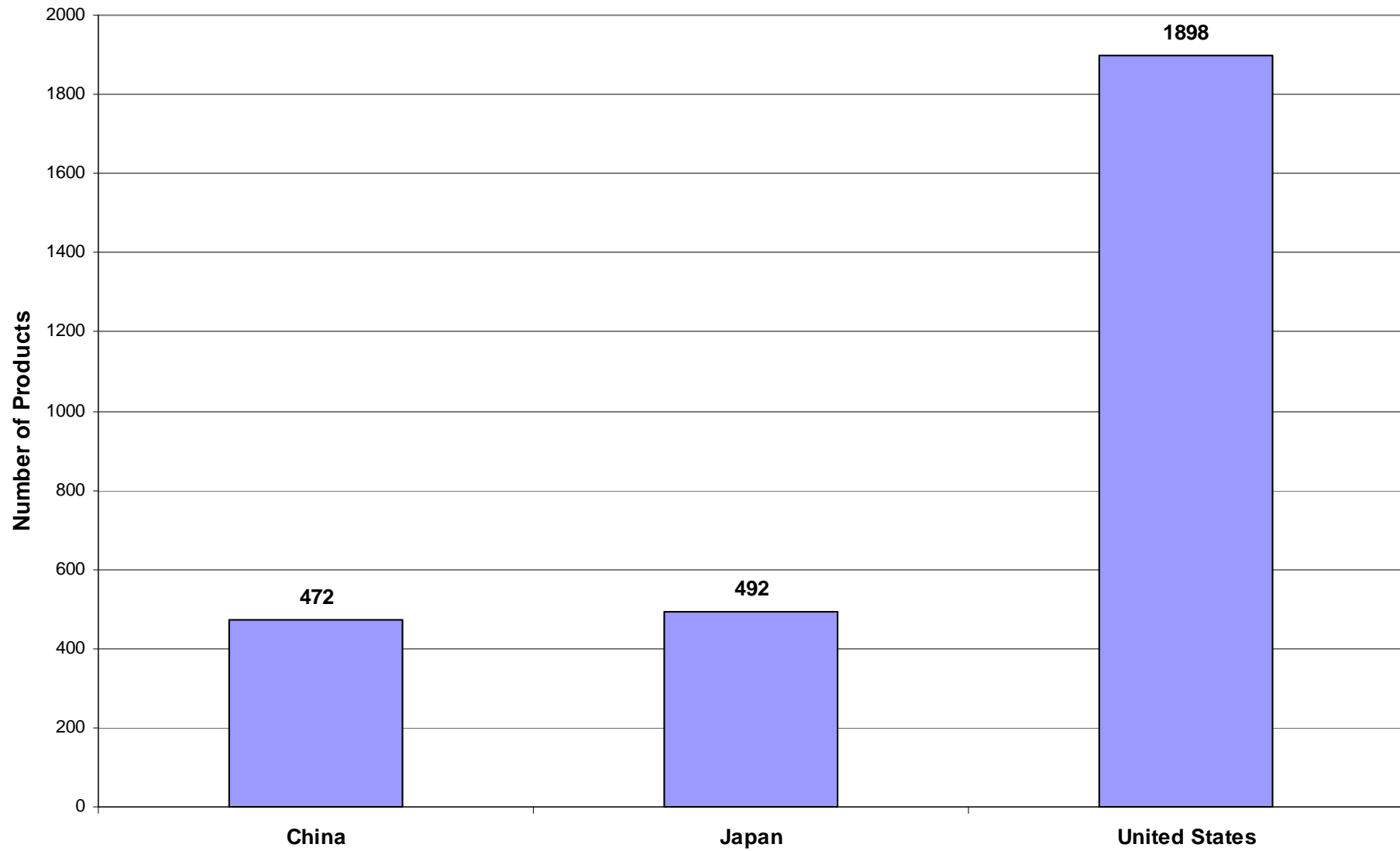
— China — United States — Japan

**Number of Companies Exporting to Principal Countries
January - December, 2010**



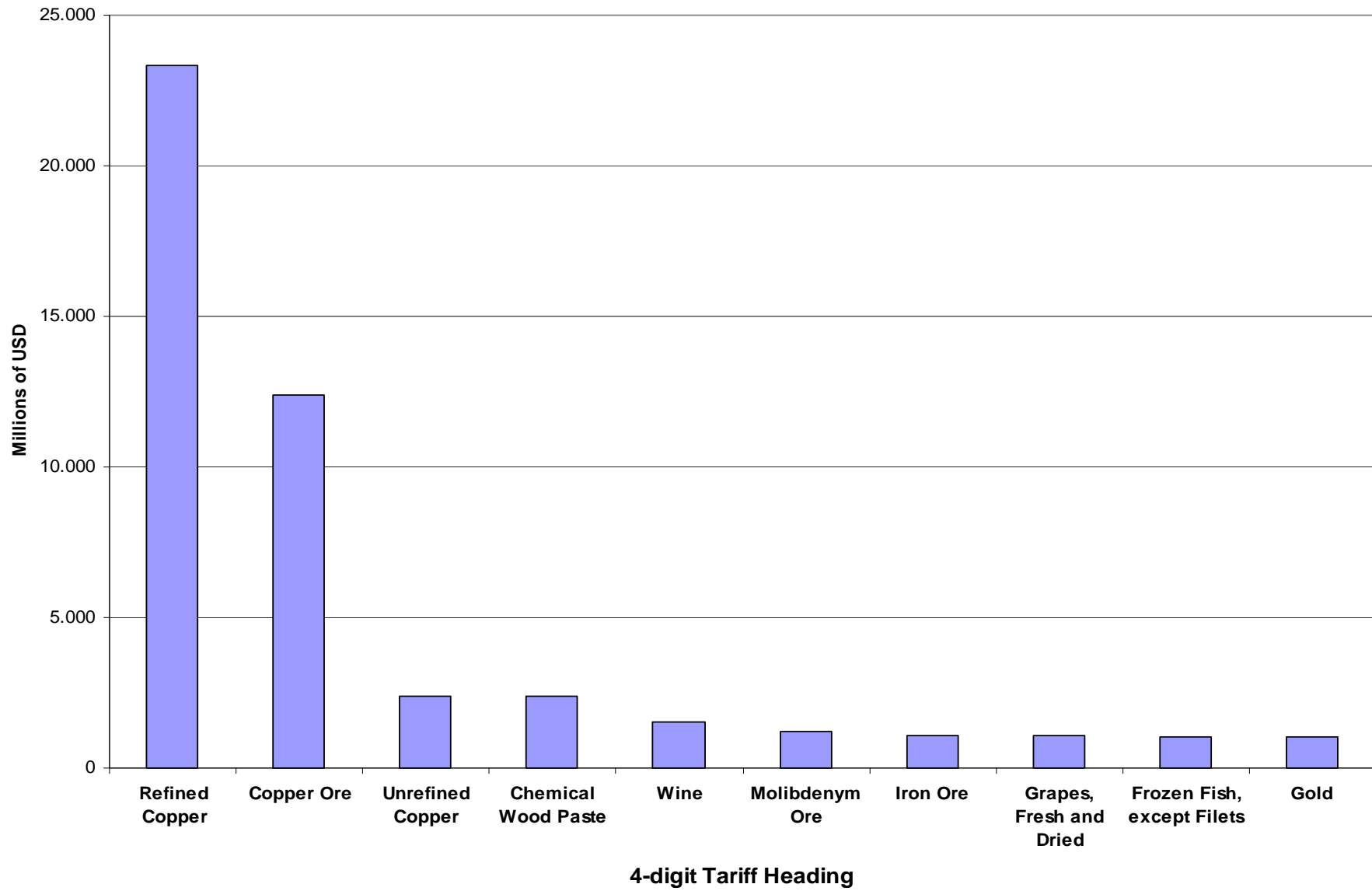
Source: Legal Publishing

Number of Exported Products by Country January - December, 2010



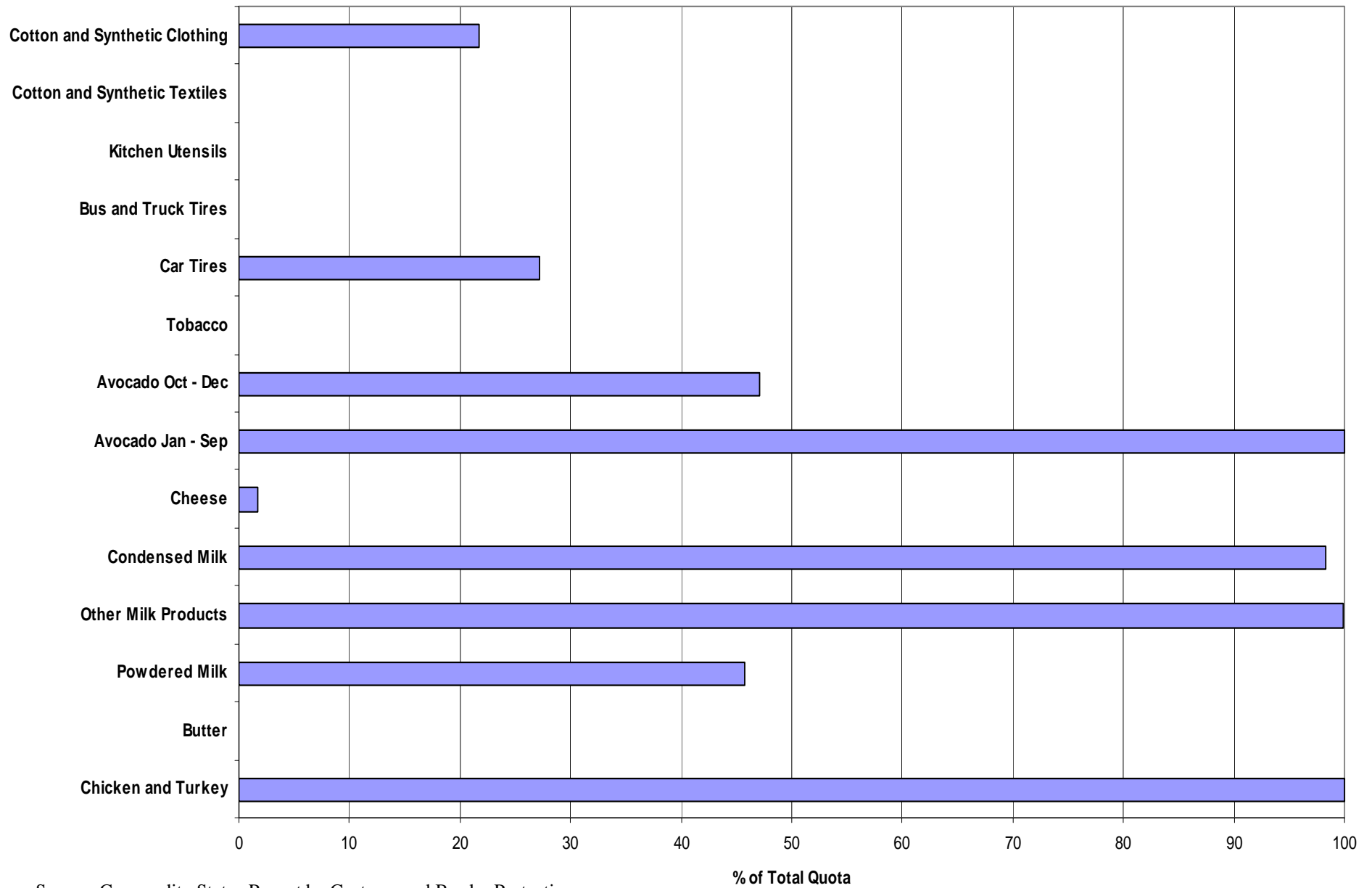
Source: Legal Publishing

**Principal Chilean Exports by 4-digit Heading
January - December, 2010**



Source: Legal Publishing

Exports from Chile to the U.S.
Quota Fulfillment for 2010

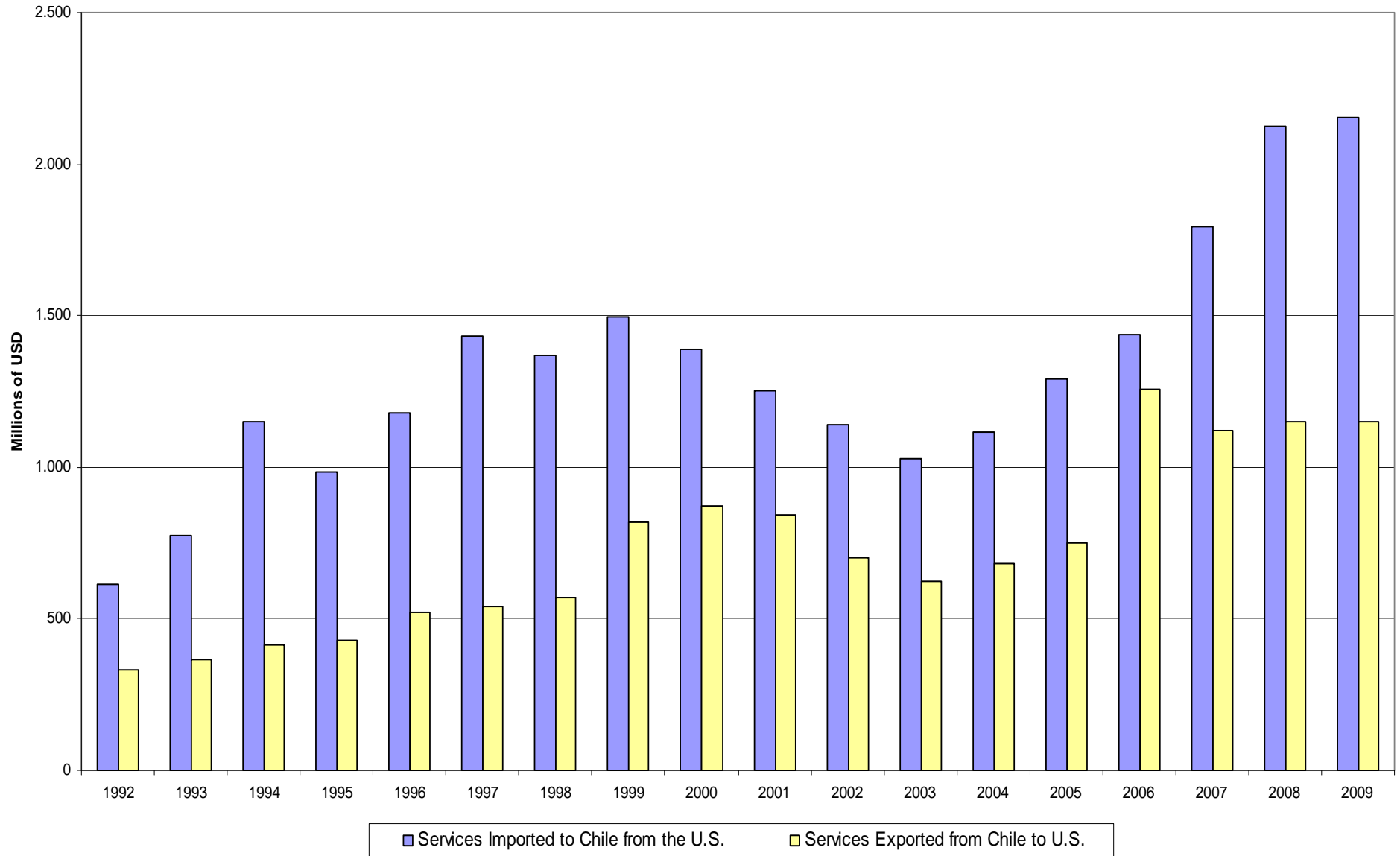


Source: Commodity Status Report by Customs and Border Protection,
US Department of Homeland Security



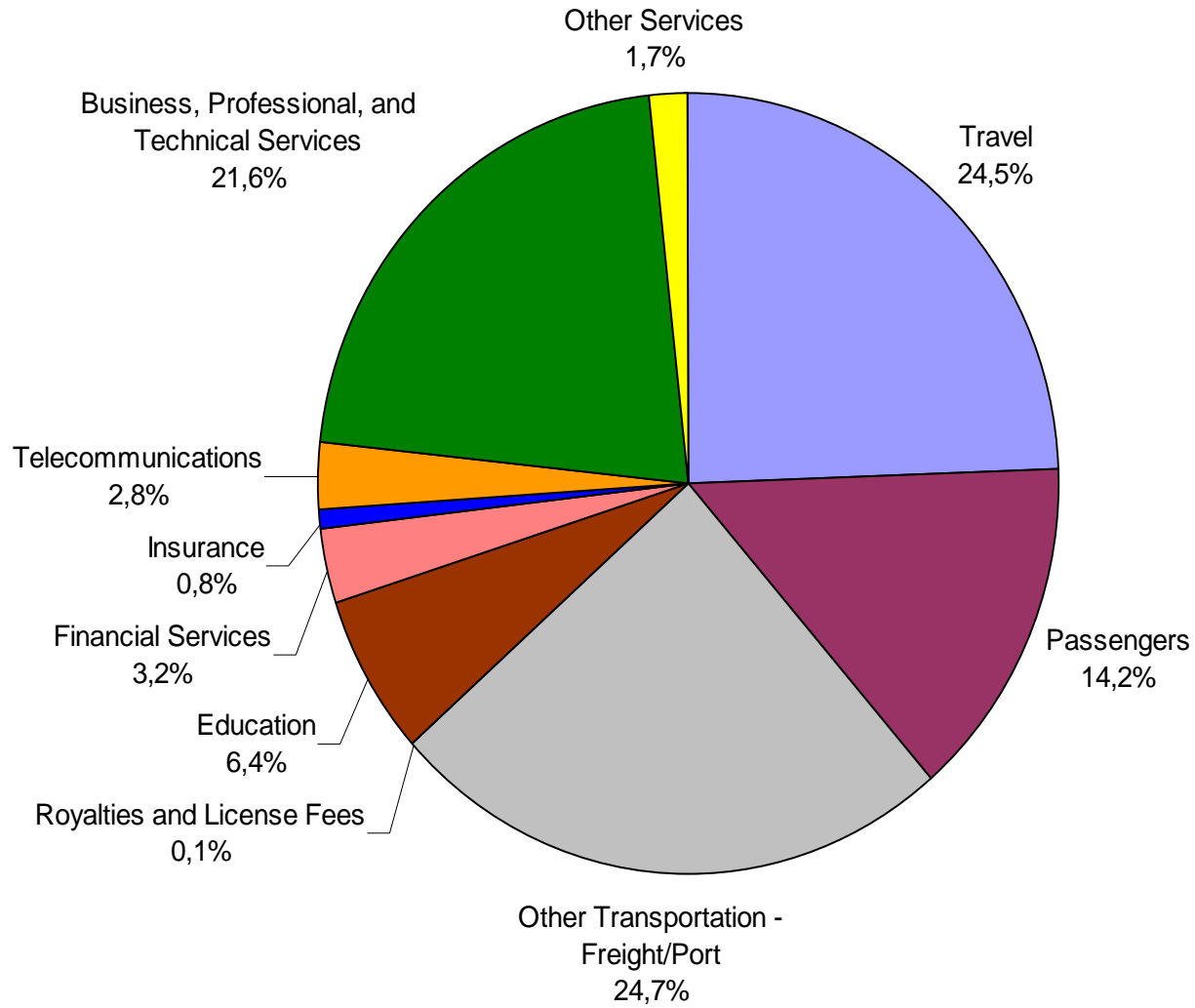
Trade in Services

U.S. - Chile Trade in Services

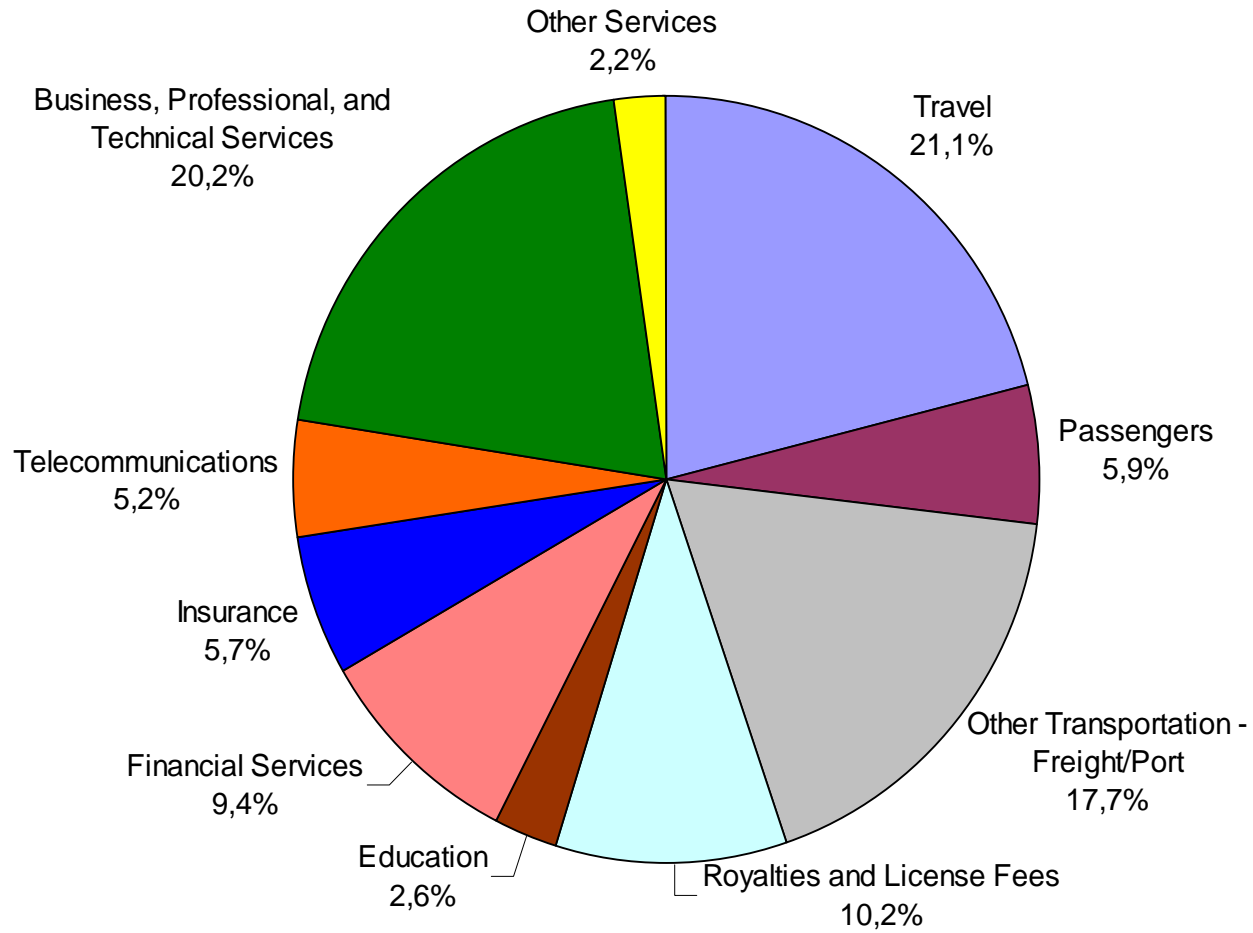


Source: Bureau of Economic Analysis –
EEUU

Chilean Exports of Services to the U.S. - 2009 (*) By Sector



Chilean Imports of Services from the U.S. - 2009 (*) By Sector



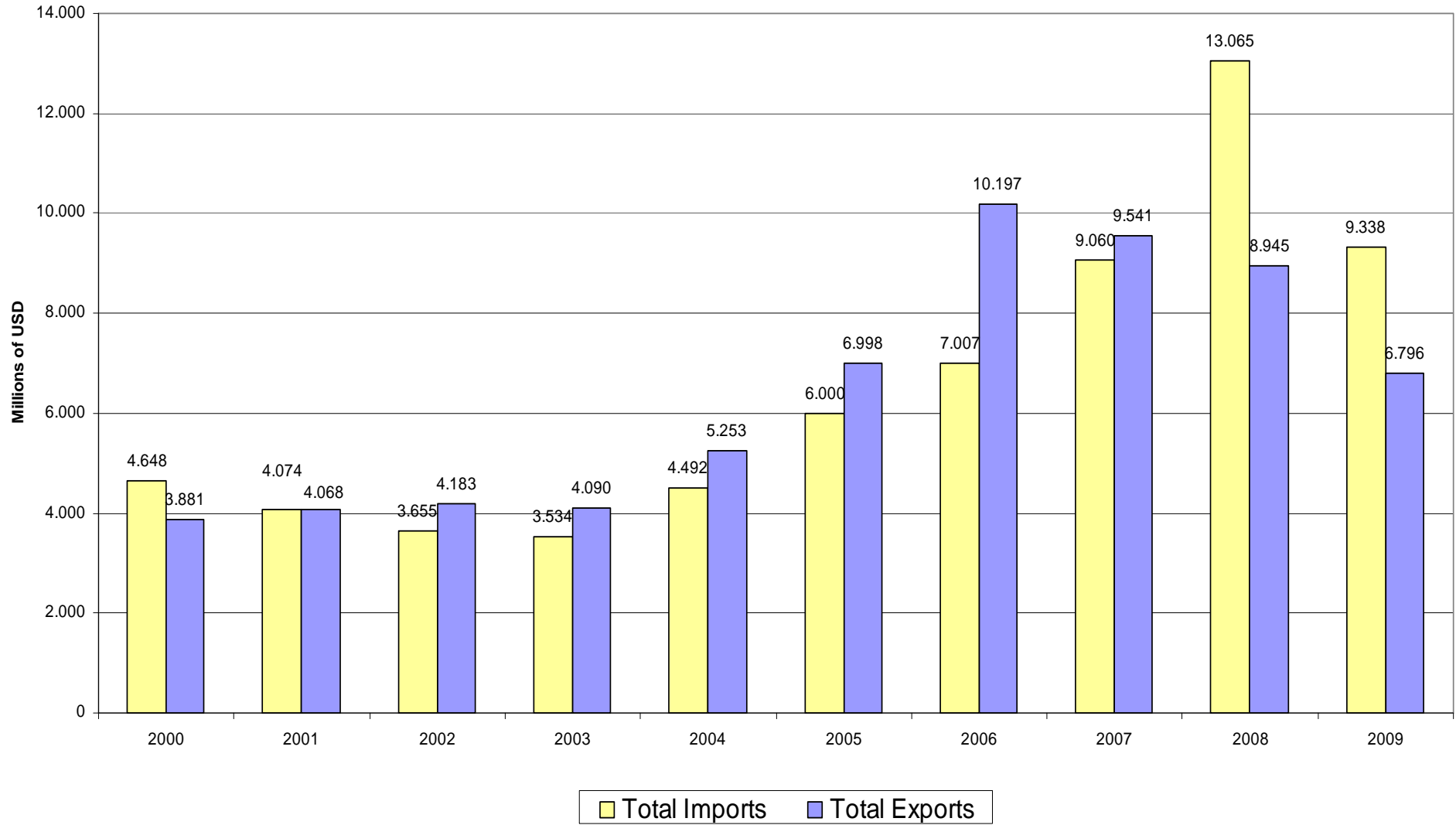


Trade in Goods and Services

Total Trade between Chile and USA

Goods and Services

January-December of each year



Source: Legal Publishing and Bureau of Economic Analysis, USA

End

-- For more information, contact the AmCham Studies Department – nora.balzarotti@amchamchile.cl