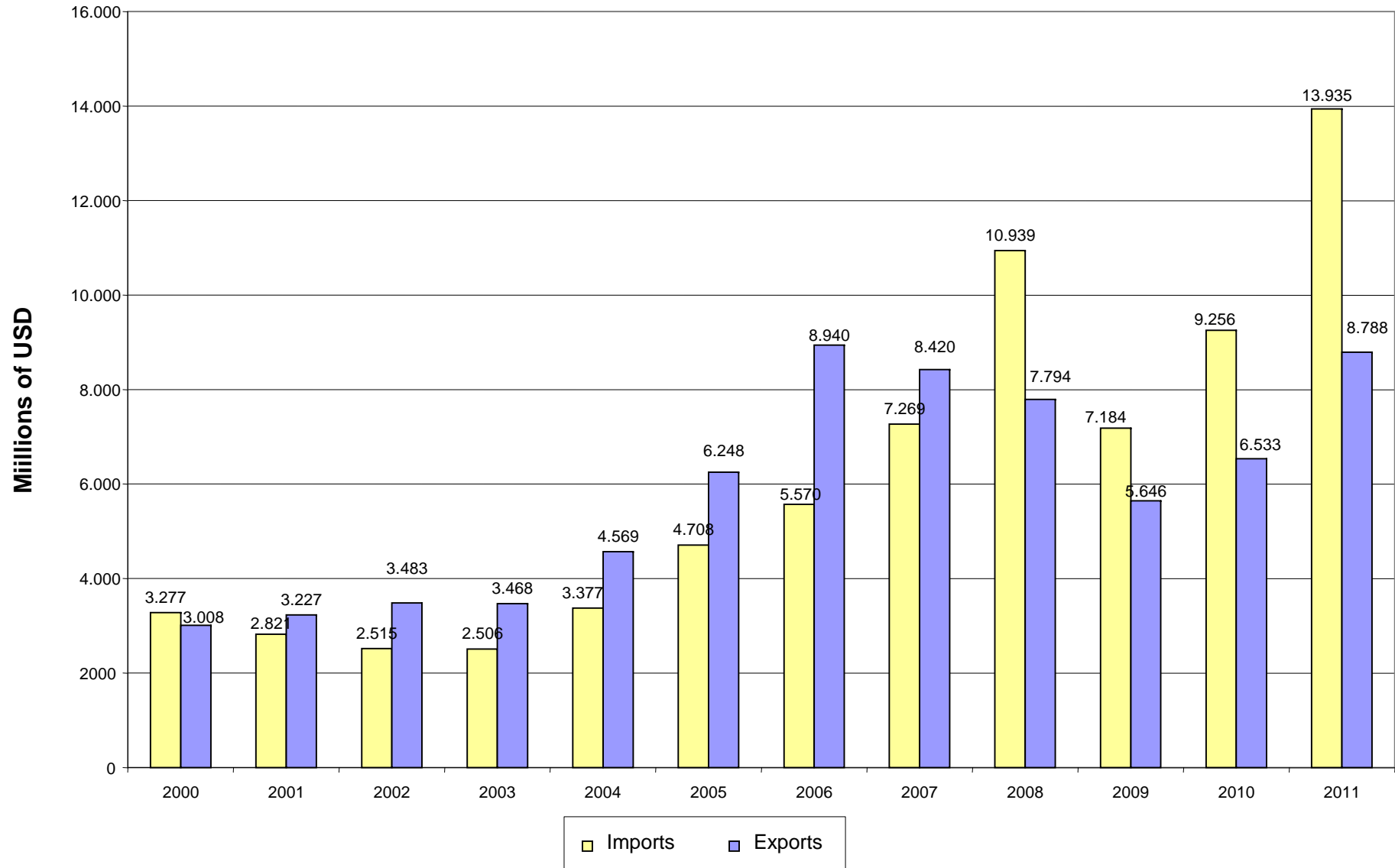




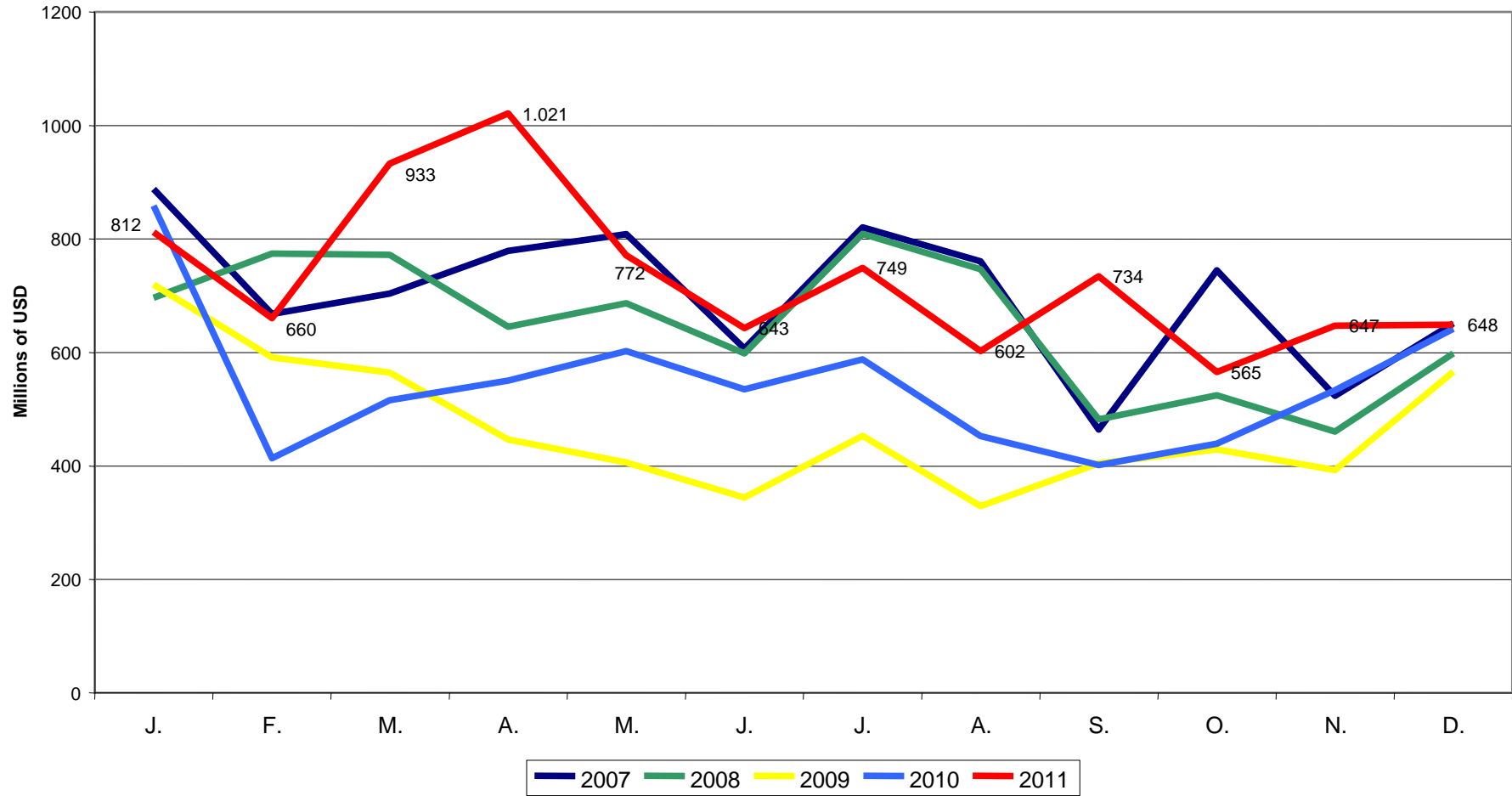
Bilateral Trade between Chile and the U.S.

January – December 2011

Trade between Chile and the U.S. January-December of each year

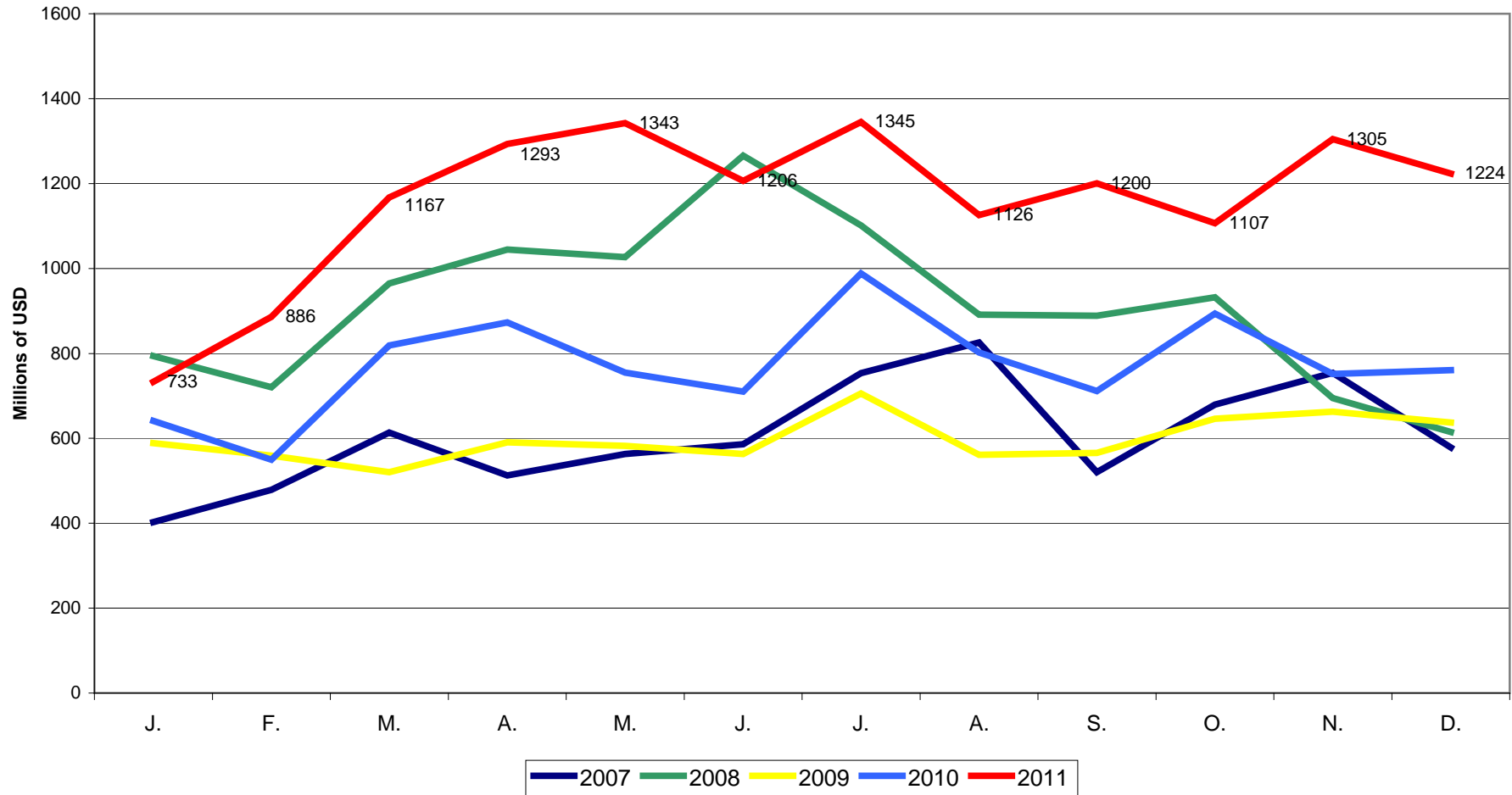


Monthly Exports from Chile to the U.S.



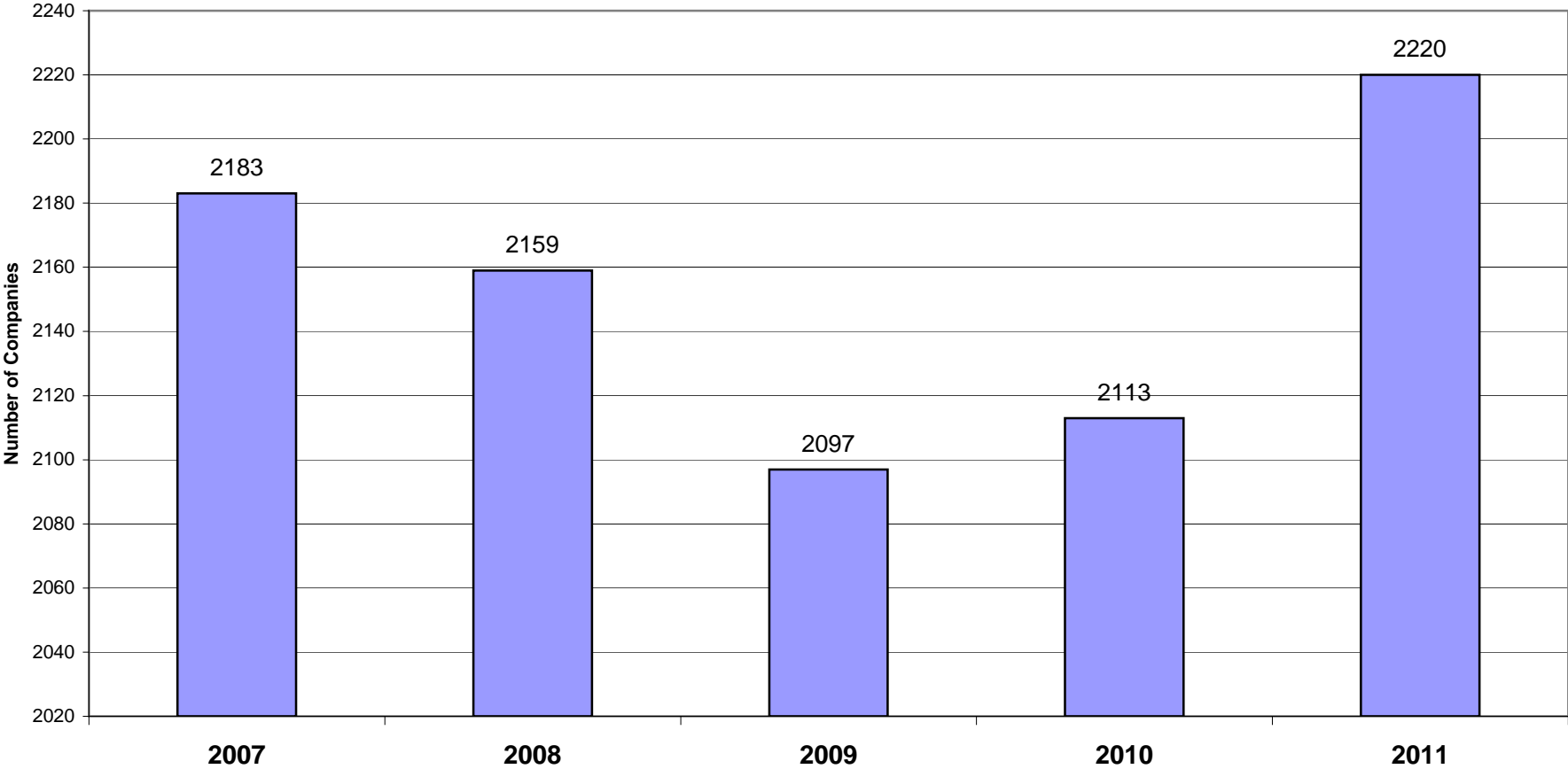
Source: AmCham, with data from Legal Publishing

Monthly Imports to Chile from the U.S.



Source: AmCham, with data from Legal Publishing

**Number of Companies Exporting to the U.S
January - December of each year**



(*) See the profile of Chilean businesses exporting to the US: (<http://www.amchamchile.cl/sites/default/files/perfil.pdf>)
Source: AmCham, with data from Legal Publishing

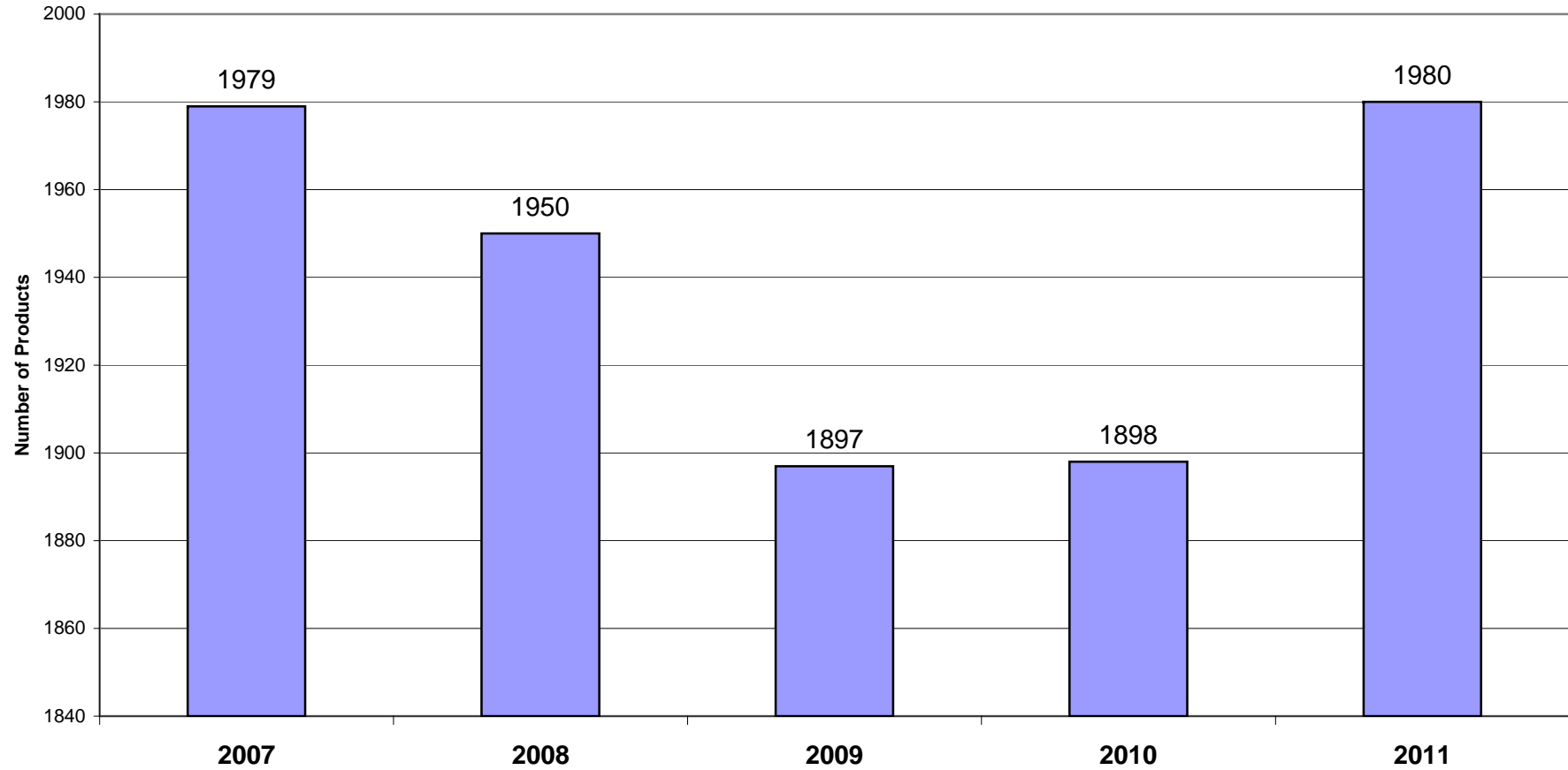
Ranking - Exporters to the U.S.
January-December 2011

Name	USD Amount	% Change*
CODELCO-CHILE	1.600.938.541,69	27,5%
MINERA ESCONDIDA LTDA.	477.674.525,29	295,0%
MINERA SPENCE S.A.	354.349.671,67	17,8%
SOC. CONT. MINERA EL ABRA	257.419.551,64	107,6%
GOODYEAR DE CHILE S.A.I.C.	220.269.996,66	207,2%
SOCIEDAD QUIMICA Y MINERA DE C	201.332.135,00	145,5%
ANGLO AMERICAN NORTE S.A.	186.853.780,90	36,6%
ANGLO AMERICAN SUR S.A	168.792.391,76	12,3%
MOLIBDENOS Y METALES S.A.	165.681.722,60	-12,5%
PANELES ARAUCO S.A.	154.837.528,67	13,1%
ASERRADEROS ARAUCO S.A.	132.552.825,12	11,4%
MONSANTO CHILE S.A.	126.037.220,48	235,4%
SALMONES MULTIEXPORT S.A.	116.906.966,87	147,0%
MINERA EL TESORO	102.359.074,76	37,9%
SQM INDUSTRIAL S.A.	98.130.843,61	35,5%

* Respecto mismo período año anterior

Fuente: Legal Publishing

**Number of Products (to 8 digits) Exported to the U.S.
January - December of each year**

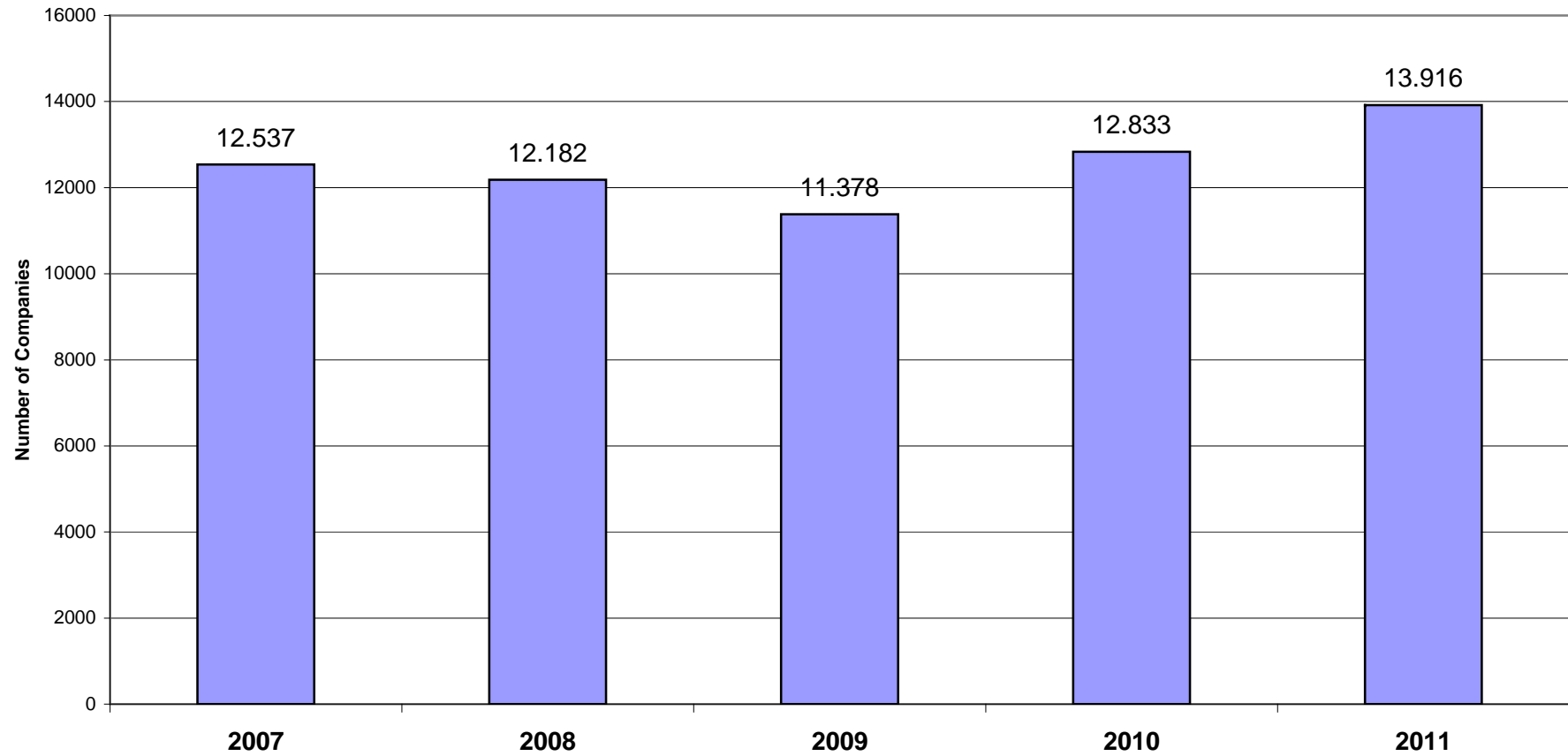


Ranking - Principal Products Exported to the U.S.
 8 digits from the Harmonized Code
 January-December 2011

Code	Name	Amount USD	% Change*
'74031100	Refined Copper - Cathodes and Cathode Sections	3.086.220.800,68	50,8%
'03041942	Atlantic and Danube Salmon Filets	383.593.723,28	104,3%
'71081200	Gold - Other Bulk Forms	286.259.380,50	35,0%
'28012000	Iodine	236.676.527,44	113,0%
'08104020	Blueberries	222.792.203,55	29,6%
'40111000	Pneumatic Radial Tires for Tourism Vehicles	219.800.840,49	208,5%
'44091022	Conifers - Frames and Mouldings	162.389.369,56	9,2%
'08061020	Grapes - Flame Seedless	146.418.604,73	28,6%
'44123910	Conifers - Hardwood	118.151.120,54	27,1%
'10051010	Corn Seeds, Hybrid	109.494.433,42	6,2%
'71069110	Silver - Bullion and Ore, not Alloyed	108.259.634,99	126,8%
'74031900	Copper - Other	102.568.954,83	-9,5%
'08061010	Grapes - Thompson Seedless	96.341.374,49	-20,4%
'25010020	Rock Salt, Saline Salt, Sea Salt	92.976.384,65	4,2%
'08061050	Grapes - Crimson Seedless	89.513.411,36	-23,0%

* Respecto mismo período año anterior
 Ranking - Principales Productos Exportados a los EE.UU.

**Number of Companies Importing from the U.S.
January - December of each year**



Source: AmCham, with data from Legal Publishing

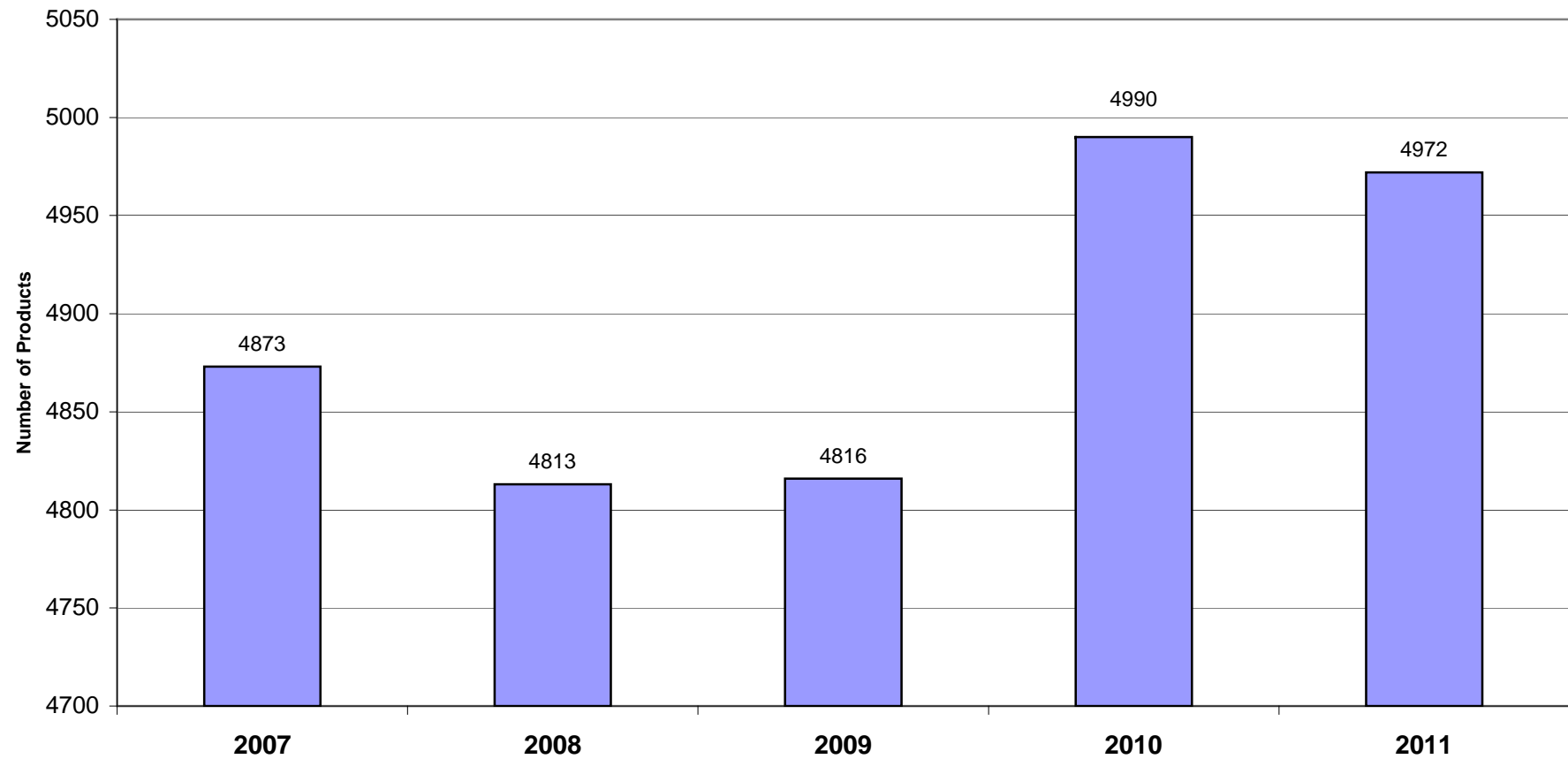
Ranking - Companies Importing from the U.S.
January-December 2011

Name	USD Amount	% Change*
CIA.DE PET. DE CHILE COPEC S A	3.273.923.741,00	184,8%
ENAP REFINERIAS S.A.	1.287.707.284,47	39,4%
FINNING CHILE S.A.	906.570.655,42	26,0%
GASMAR S.A.	288.828.655,39	189,7%
SALINAS Y FABRES S.A.	222.491.548,76	59,1%
AES GENER S.A.	208.252.676,00	294,5%
COMERCIAL CHRYSLER S.A.	175.302.573,66	51,5%
KOMATSU CHILE S.A.	172.042.764,70	16,4%
CODELCO-CHILE	161.149.408,53	2,3%
MOLIBDENOS Y METALES S.A.	114.645.300,84	21228,2%
MINERA ESCONDIDA LTDA.	112.603.691,39	13,3%
BUCYRUS INTERNATIONAL (CHILE)	100.342.413,91	27,5%
GOODYEAR DE CHILE S.A.I.C.	97.771.233,33	67,8%
MINEPRO CHILE S.A.	93.020.303,09	19,4%
FORD MOTOR COMPANY CHILE LTDA.	88.856.538,94	20,7%

* Respecto mismo período año anterior

Fuente: Legal Publishing

**Number of Products (to 8 digits) Imported from the U.S.
January - December of each year**



Source: AmCham, with data from Legal Publishing

Ranking - Principal Products Imported from the U.S.
 8 digits from the Harmonized Code
 January-December 2011

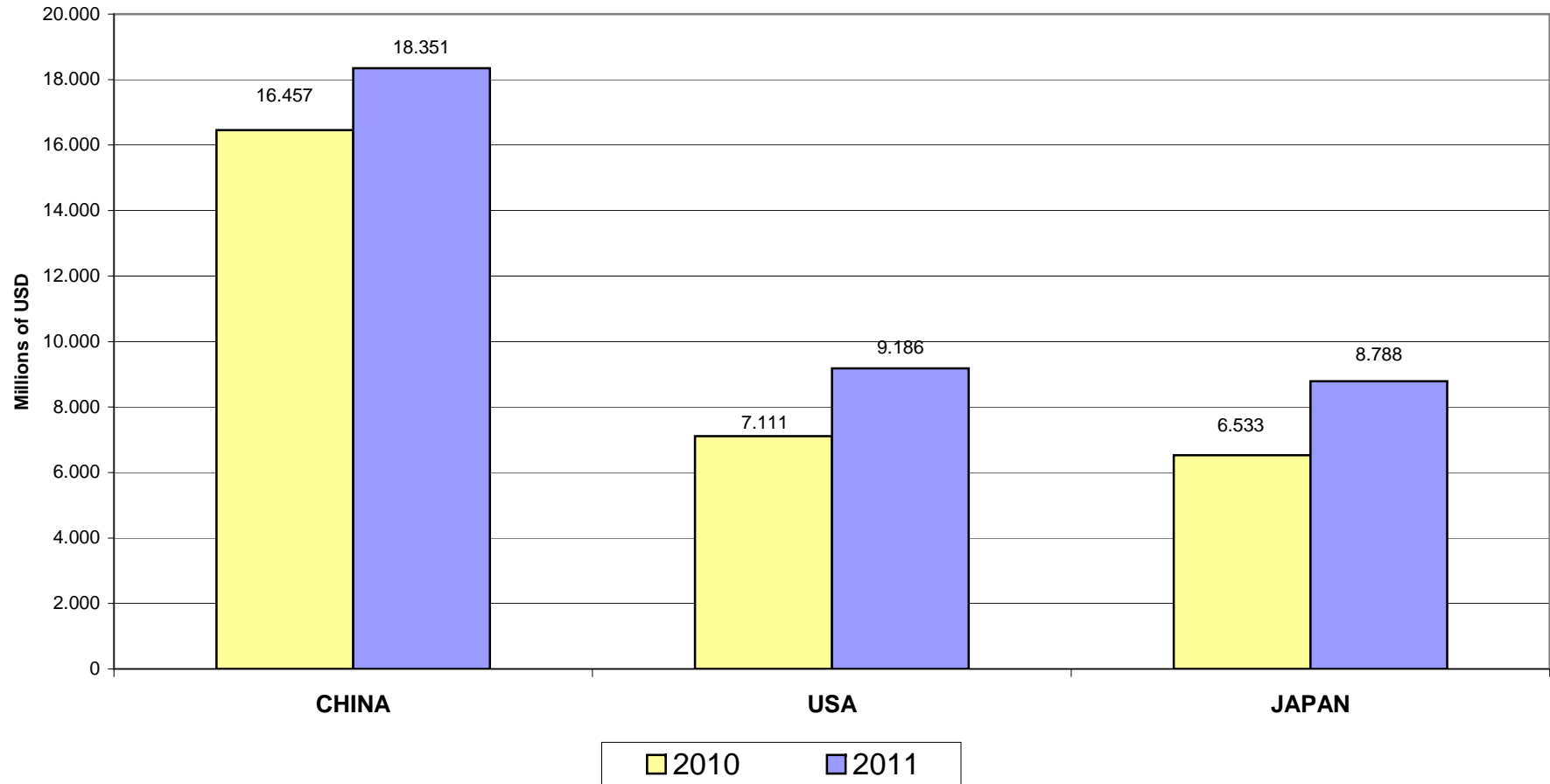
Code	Name	USD Amount	% Change*
'27101940	Refined Combustible Oil (gasoil, diesel, oil)	3.499.029.561,62	203,2%
'87041090	Transport Vehicles - Other	508.487.221,70	22,1%
'27111200	Propane	288.836.984,33	189,7%
'27101959	Heavy Residual Combustible Oils - Other	263.686.668,37	39,7%
'27101123	Refined Petroleum for Land Vehicles, Unleaded 97 Octane	247.037.188,51	17,4%
'27101122	Refined Petroleum for Land Vehicles, Unleaded 93 Octane	245.151.584,57	13,4%
'27011220	Bituminous Coal	205.842.952,53	224,5%
'29091910	Eethyl Tertiary Butyl Ether (M TBE)	159.627.529,86	70,3%
'84295290	Other Machinery with a Superstructure that Rotates 360	158.192.623,19	81,3%
'87032491	Tourism Vehicles	154.065.573,92	26,2%
'10019000	Wheat - Other	142.405.484,15	24,8%
'84314990	Parts for Exploration and Drilling	126.516.011,02	18,5%
'27101961	Basic Petroleum Oils	122.551.678,62	19,7%
'84295110	Front-End Loaders	117.270.466,44	5,8%
'26139010	Unroasted Molybdenum Concentrates and Ores	114.036.748,31	247013,2%

* Respecto mismo período año anterior

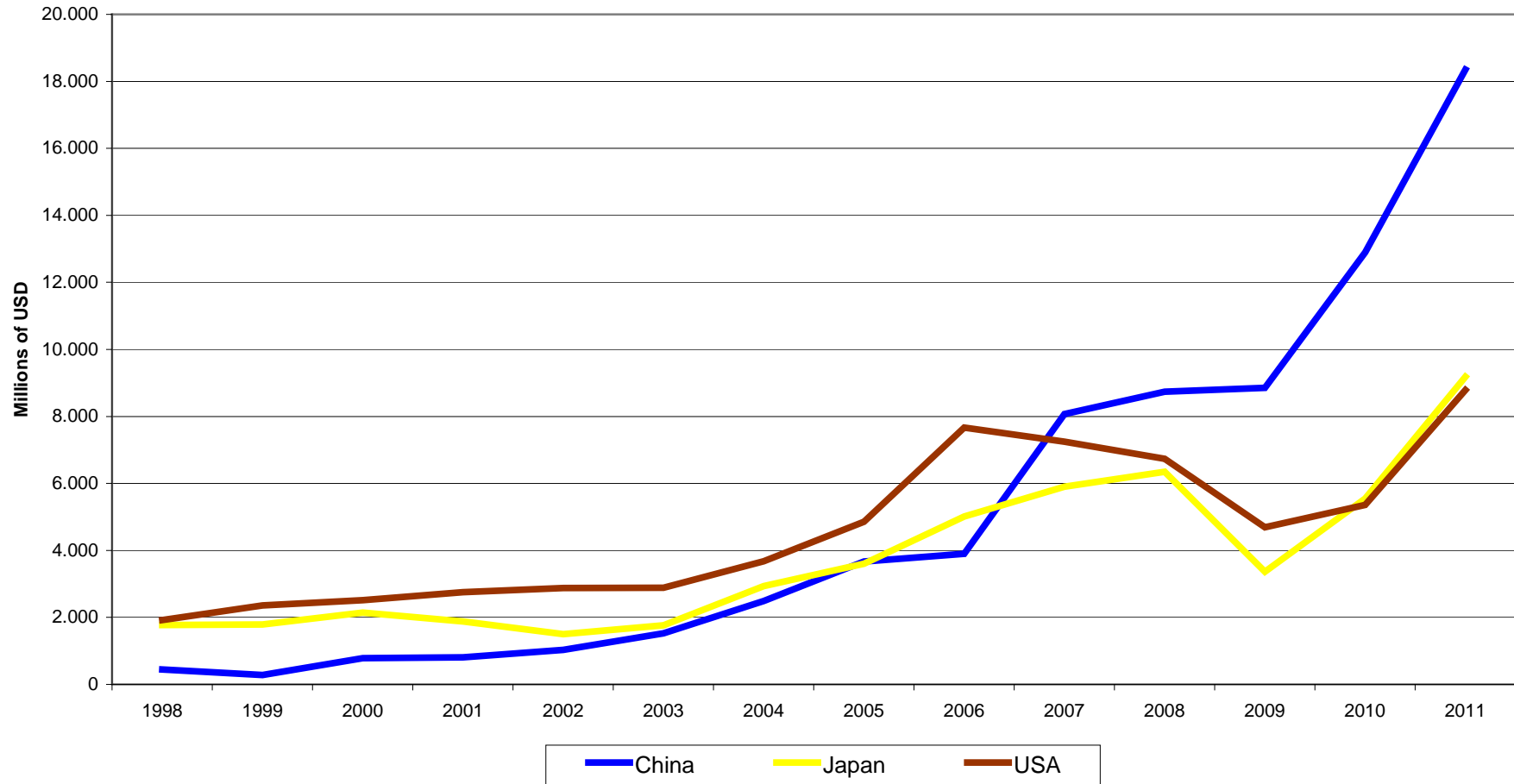
Fuente: Legal Publishing

Principal Destinations of Chilean Exports

January - December, 2010 and 2011



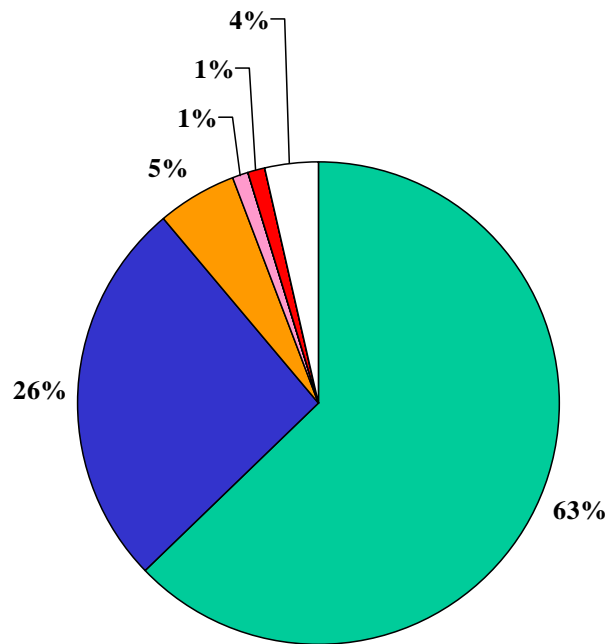
Exports to Principal Destinations January - December of each year



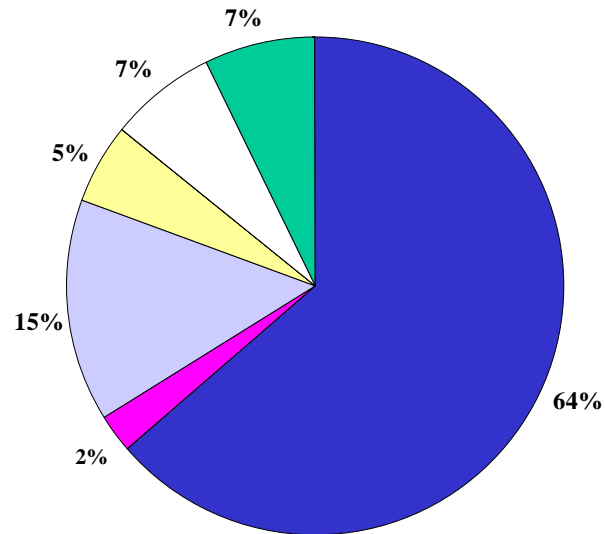
Profile of Chilean Exports by Country

January – December, 2011

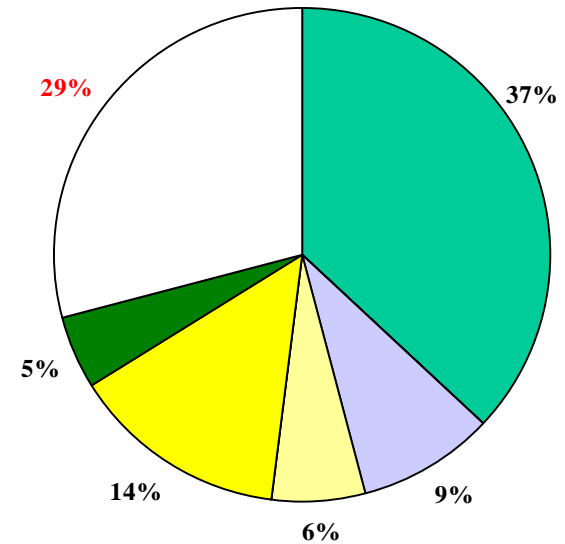
CHINA



JAPAN

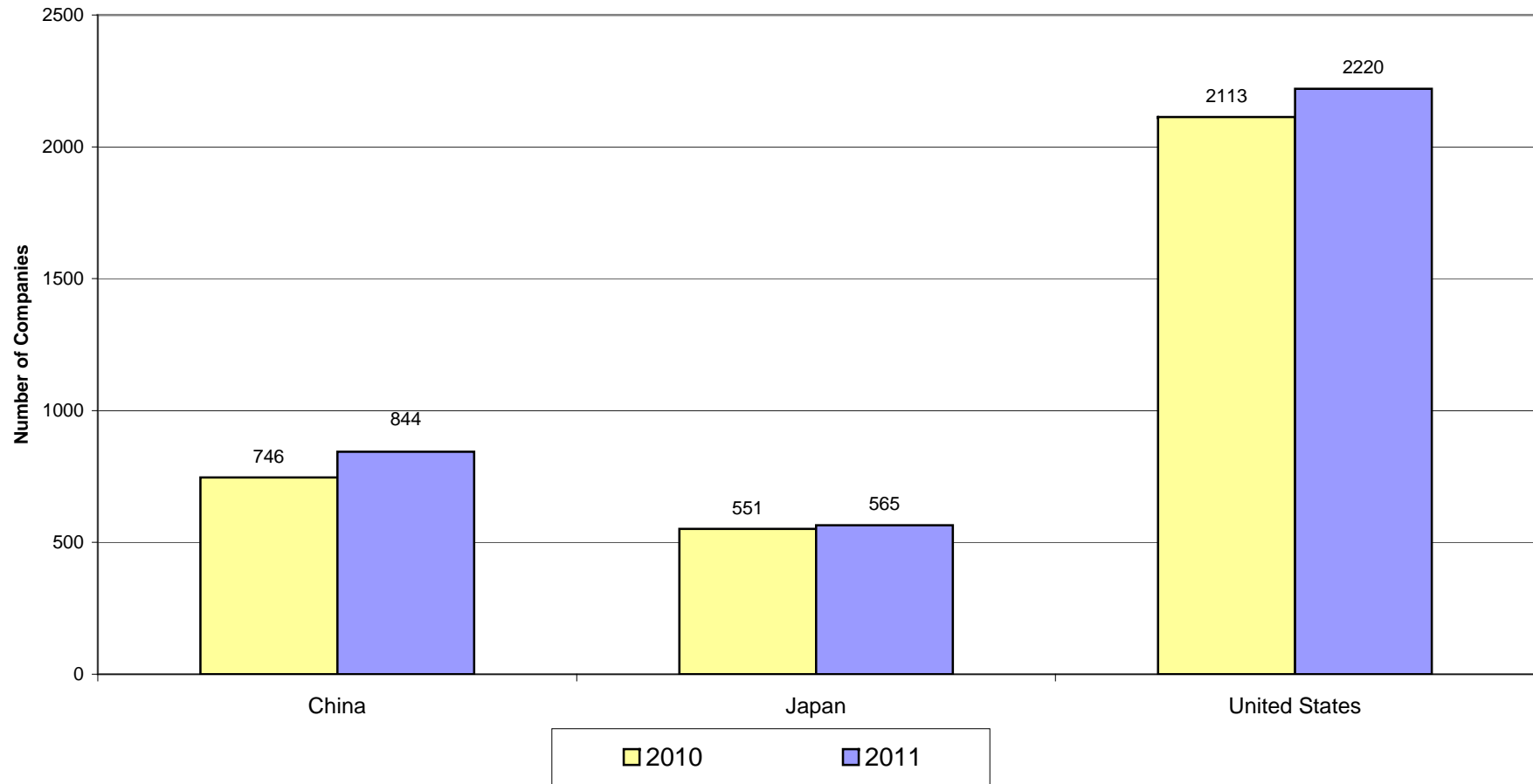


USA

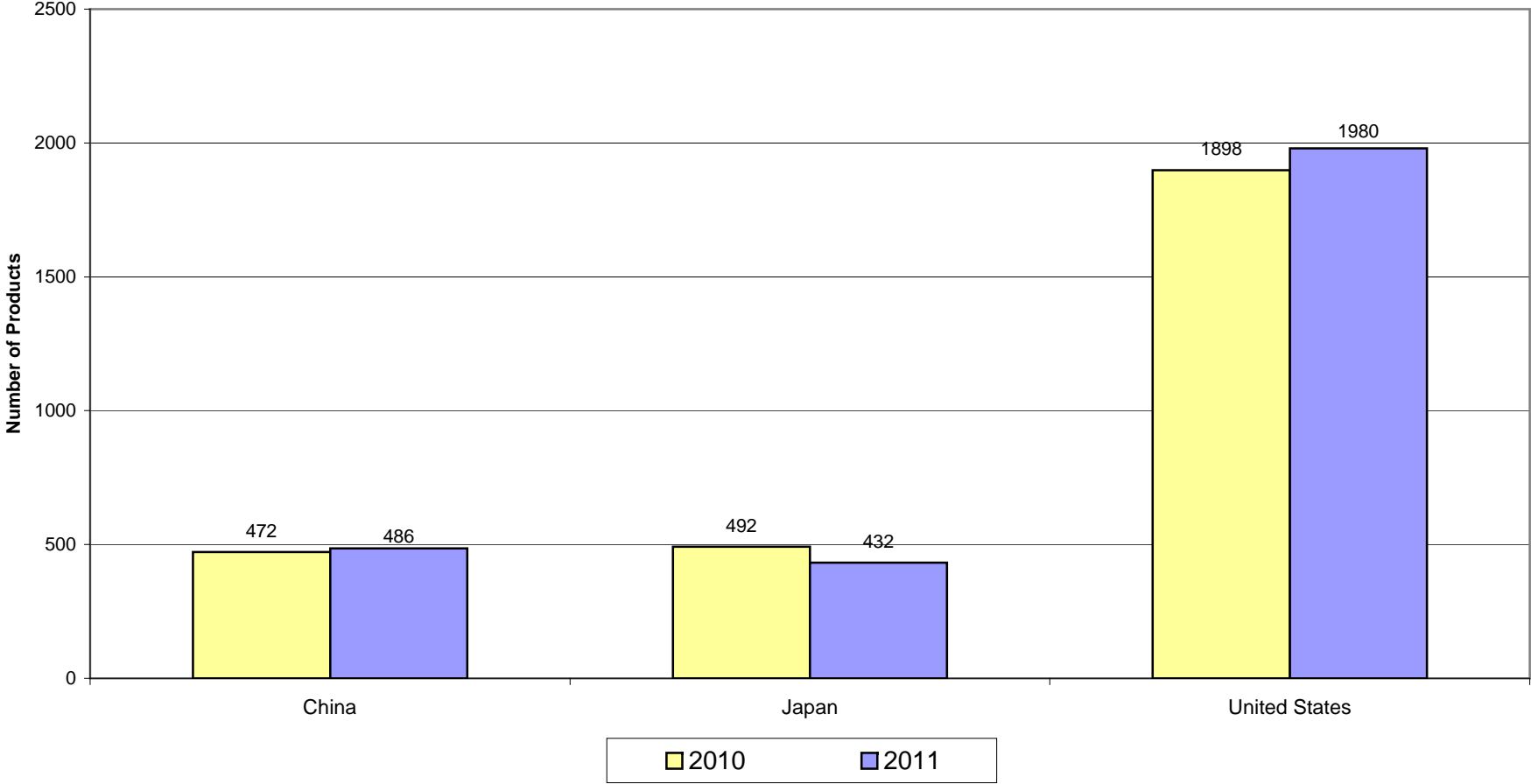


- | | |
|----------------------------|--|
| ■ 74 — Copper | ■ 26 — Ores: slag and ash |
| ■ 47 — Chemical wood paste | ■ 23 — Animal meat products unsuitable for human consumption |
| ■ 02 — Meat | ■ 03 — Fish and Crustaceans |
| ■ 44 — Wood | ■ 28 — Organic or inorganic compounds, metals, or rare earths. |
| ■ 08 — Fruit | ■ 71 — Precious metals and stones |
| □ Other | |

**Number of Companies Exporting to Principal Countries
January - December, 2010 & 2011**

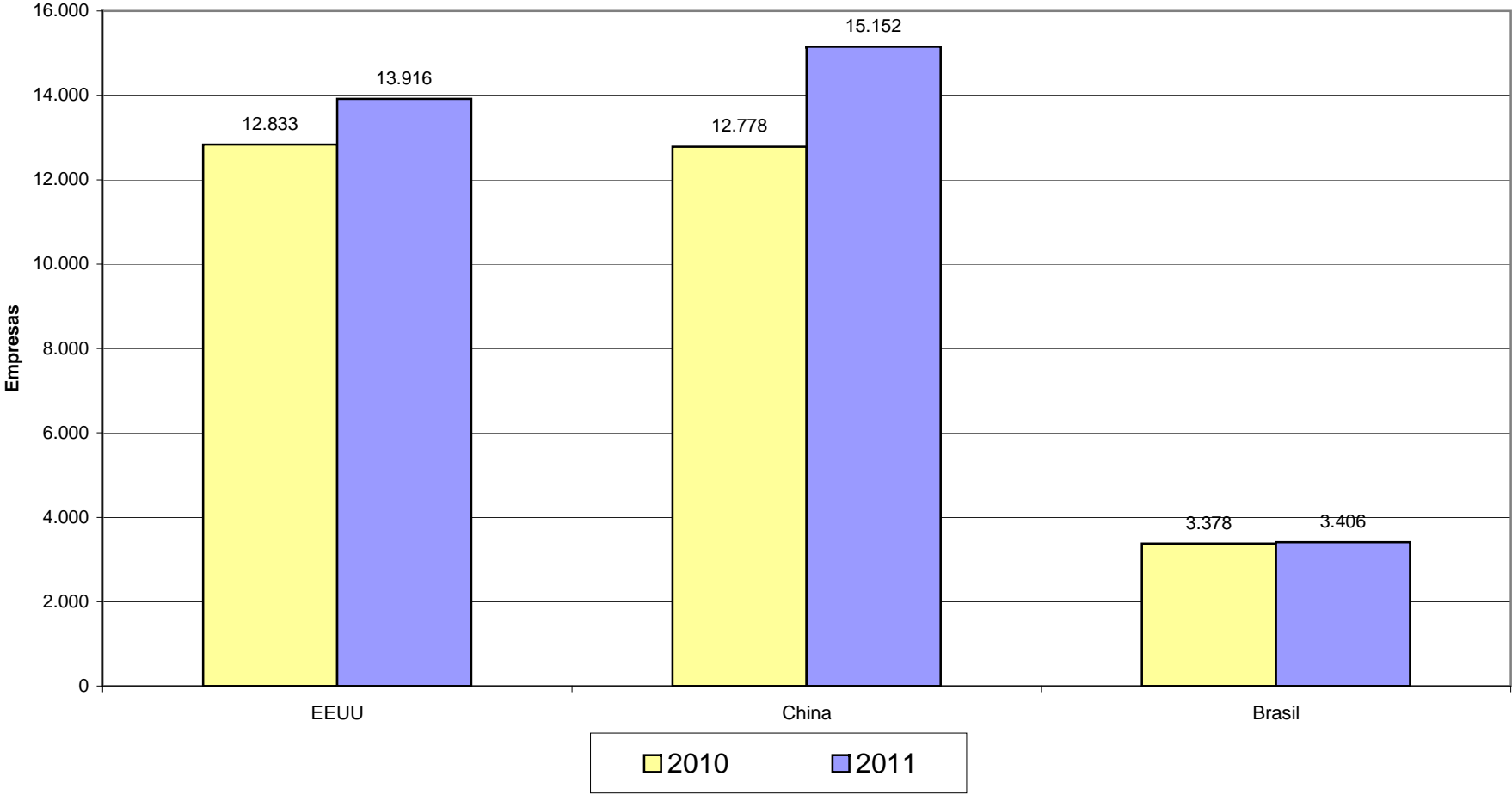


**Number of Exported Products by Country
January - December, 2010 and 2011**



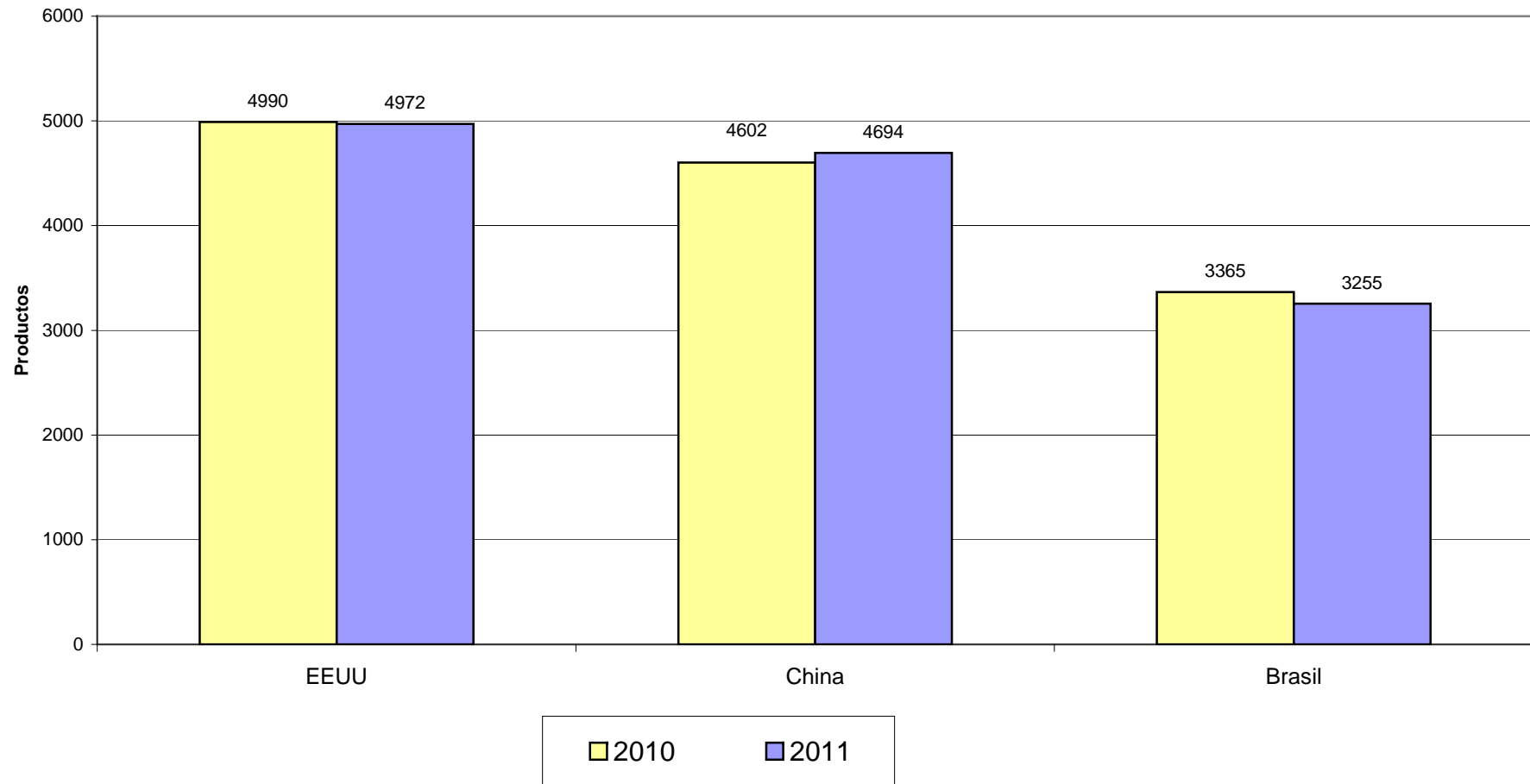
Source: AmCham, with data from Legal Publishing

**Number of Companies Importing from Principal Countries
January - December, 2010 & 2011**



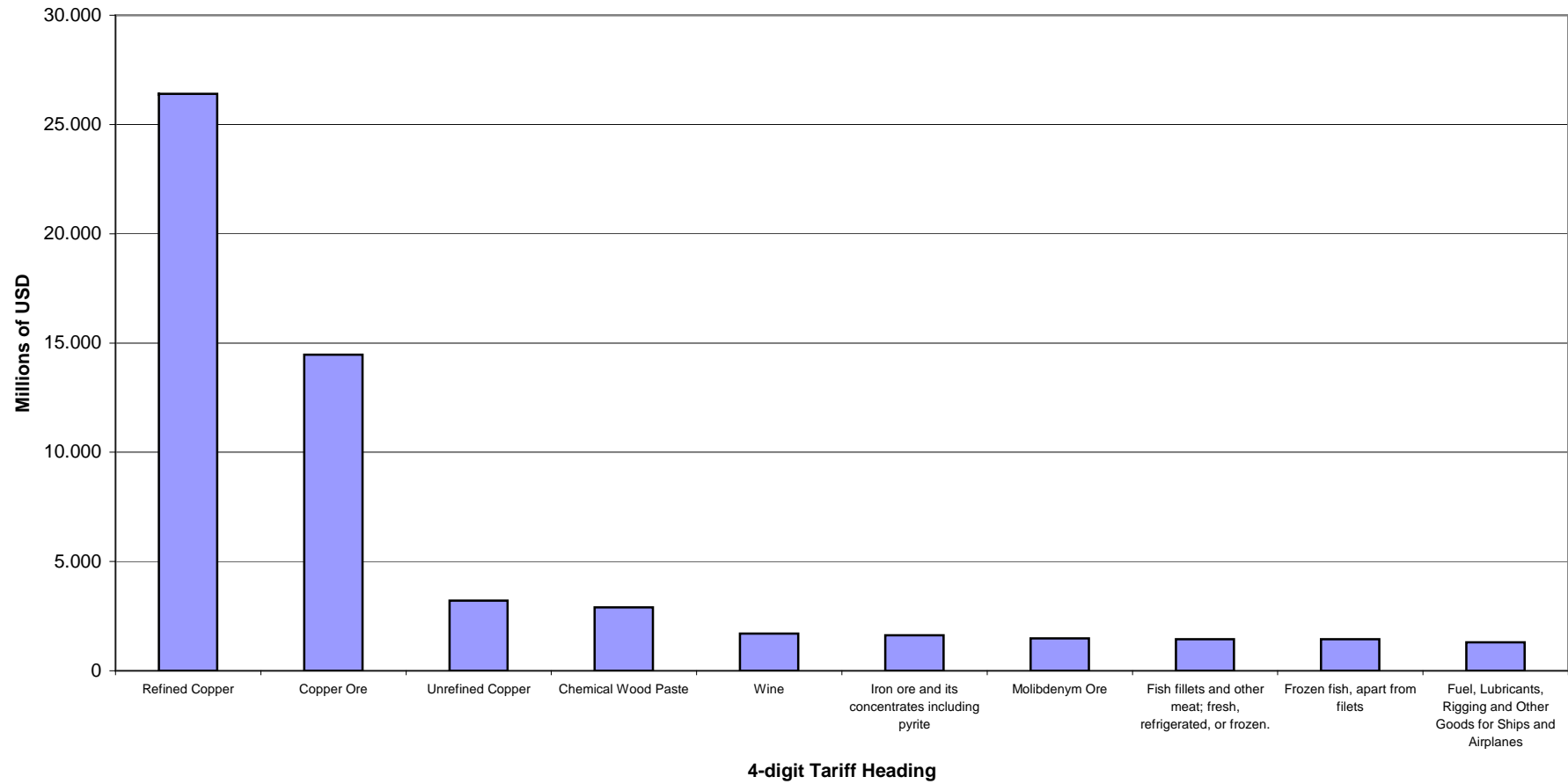
Source: AmCham, with data from Legal Publishing

Number of Products Imported from Principal Countries of Origin
January - December, 2010 & 2011



Source: AmCham, with data from Legal Publishing

Principal Chilean Exports by 4-digit Heading January - December, 2011



Source: AmCham, with data from Legal Publishing



End

–For more information, write to the AmCham Chile Studies Department – sam.andrus@amchamchile.cl